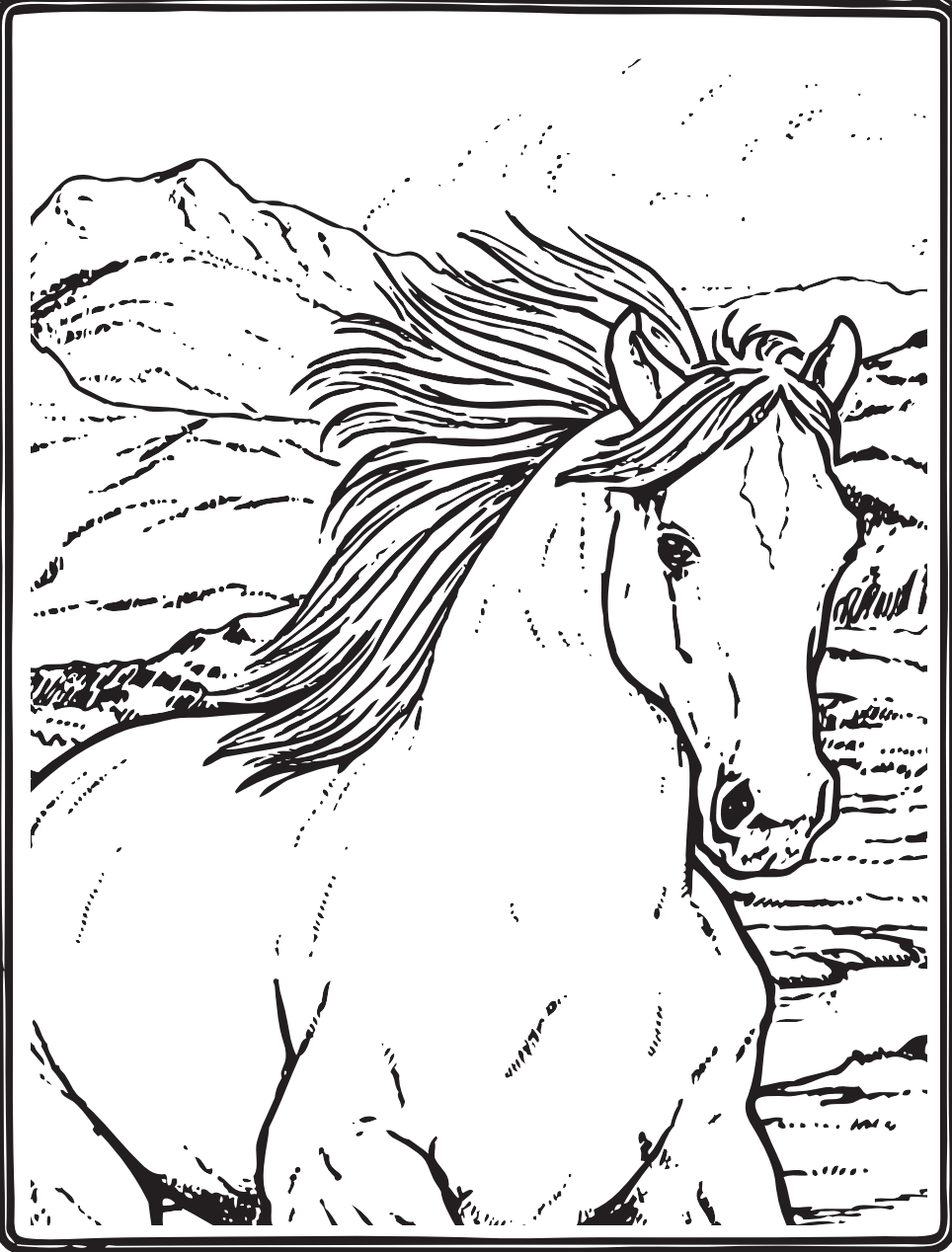


2012
Feast of Tabernacles



DAHLONEGA, GEORGIA

WELCOME to the Feast of Tabernacles



Isaiah 11:6 The wolf also shall dwell with the lamb, and the leopard shall lie down with the kid; and the calf and the young lion and the fatling together; and a little child shall lead them.

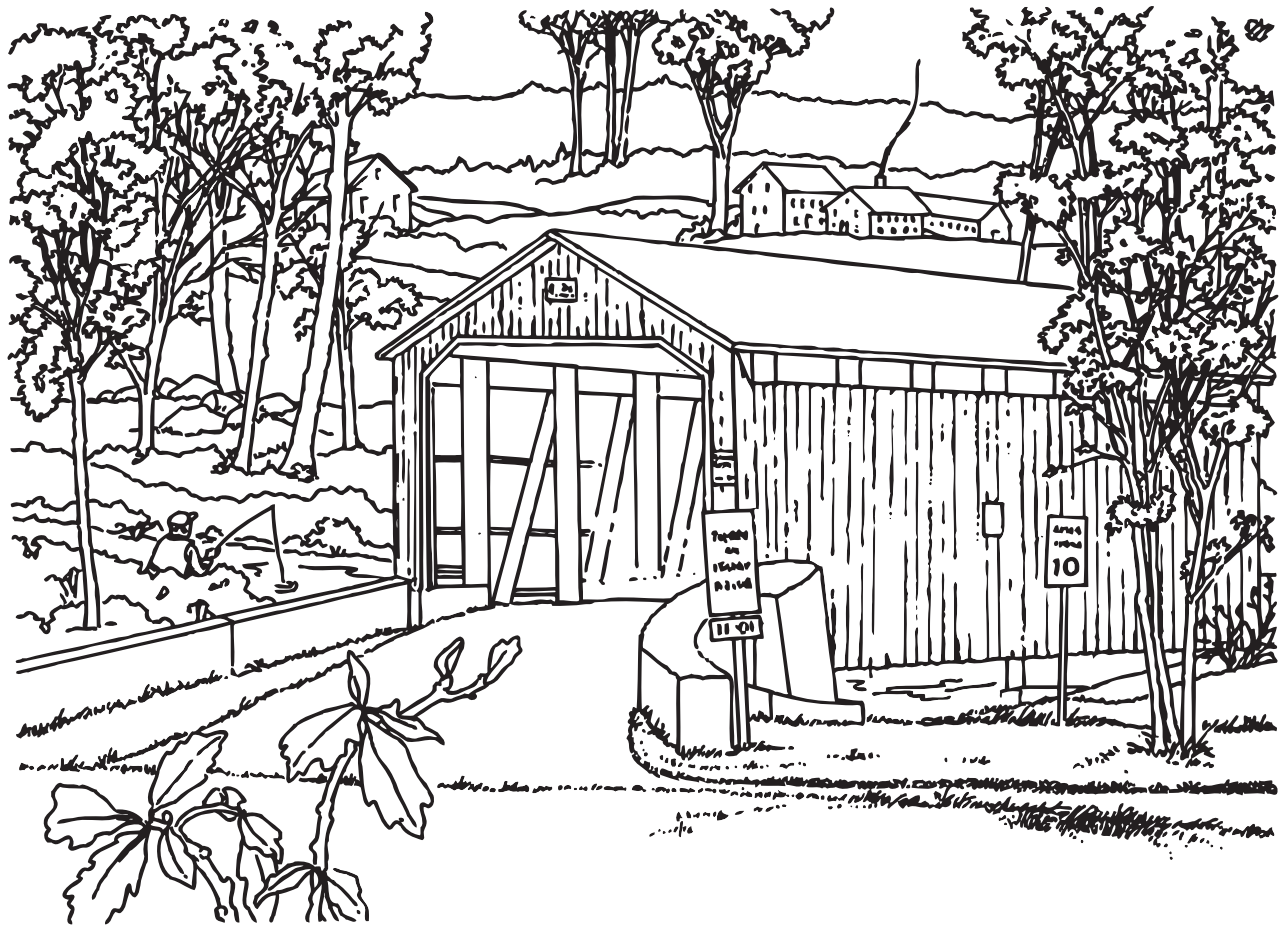




Peacocks in a flowering magnolia tree.



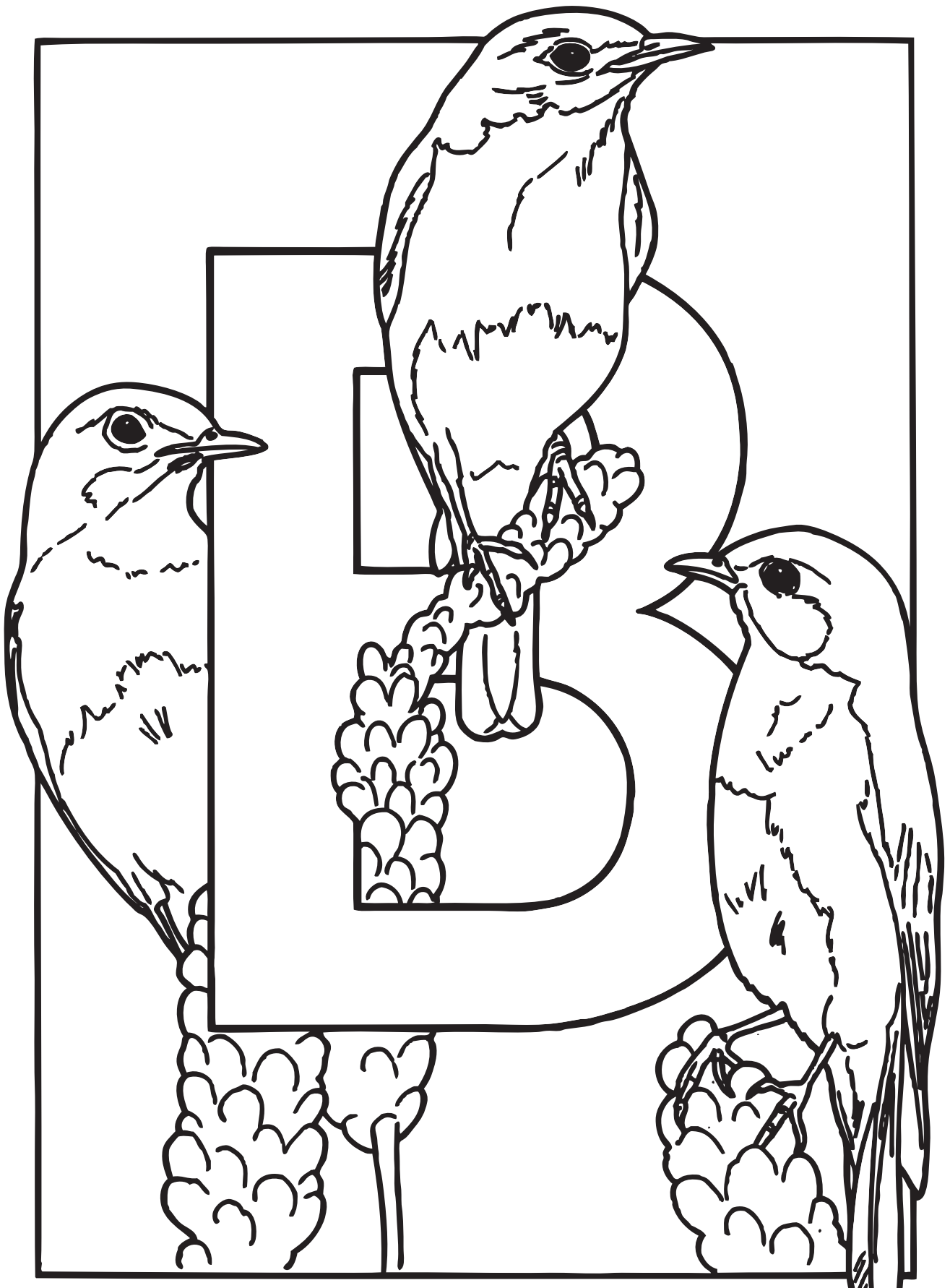
**JAN IS IN THE MIDDLE OF THE FOREST LOOKING FOR A PLACE TO CAMP.
HELP HER FIND: A HOUSE, BED, TABLE, CHAIR, CUP, FORK, AND SPOON.**



GOD'S HOLY DAYS

1. PASSOVER
2. FEAST OF UNLEAVENED BREAD
3. PENTECOST
4. FEAST OF TRUMPETS
5. DAY OF ATONEMENT
6. FEAST OF TABERNACLES
7. LAST GREAT DAY

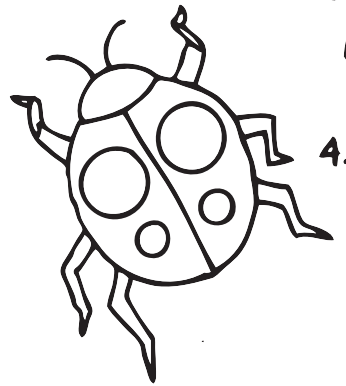
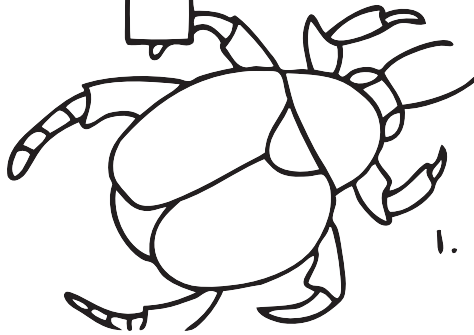
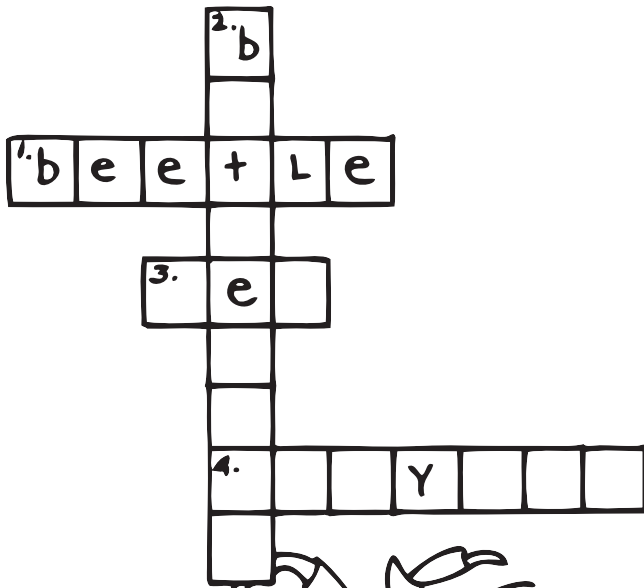
**TRACE OVER THE
LETTERS IN THE
NAME OF EACH
HOLY DAY.**



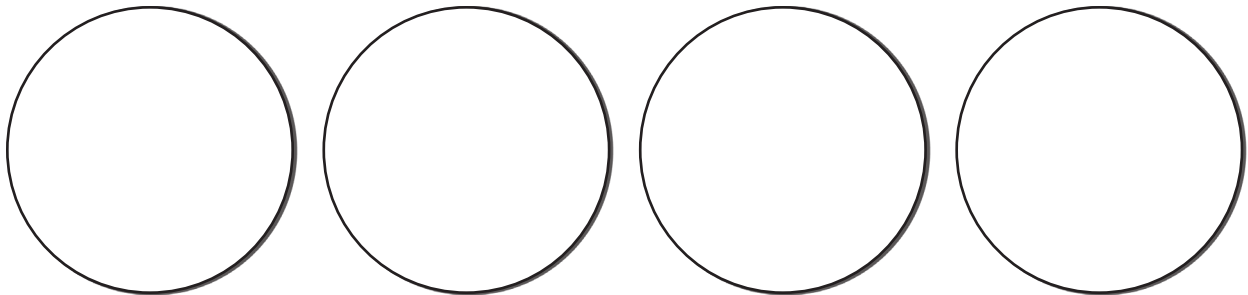
B is for Bluebird (Eastern, *Sialia sialis*) Far left: Female

BUG FUN

COMPLETE THIS CROSSWORD PUZZLE. FILL IN THE NAMES OF THE INSECTS PICTURED HERE. NUMBER 1 HAS BEEN FILLED IN FOR YOU.



DRAW MORE BUGS HERE



Fruits Mentioned in the Bible

| | | | | | | | | | | | | | | | | | |
|---|---|---|---|---|---|---|---|---|---|---|---|---|---|---|---|---|---|
| A | N | E | P | O | M | E | G | R | A | N | A | T | E | S | H | M | S |
| P | Q | F | I | K | U | S | W | O | Y | D | A | E | I | U | G | U | Y |
| P | M | U | I | L | I | A | D | I | H | N | E | T | D | J | M | H | C |
| L | D | E | U | G | C | L | F | Y | K | B | I | N | W | M | T | S | A |
| E | U | I | M | R | S | K | J | W | L | U | Q | Z | E | A | B | T | M |
| S | I | O | E | E | N | P | L | E | R | M | A | R | N | P | I | I | O |
| Y | P | L | L | P | U | T | S | F | C | U | F | Y | K | F | X | U | R |
| F | N | P | O | T | L | R | Y | T | I | R | B | G | F | T | N | R | E |
| U | C | I | N | S | J | T | M | Y | U | W | H | U | I | S | B | F | F |
| H | D | H | S | R | S | Y | G | I | F | Q | A | X | R | R | V | S | R |
| E | A | B | G | A | K | D | T | B | S | T | K | M | S | T | E | U | U |
| R | T | C | H | W | R | I | Z | H | A | J | G | F | T | U | K | O | I |
| W | E | S | D | O | L | I | V | E | S | A | Y | U | F | I | A | I | T |
| O | S | N | A | L | Z | D | R | F | N | T | U | L | R | A | R | C | R |
| L | H | X | B | J | L | G | B | U | P | C | E | I | U | V | D | E | D |
| M | M | Q | C | H | A | T | N | A | W | X | R | V | I | B | N | R | I |
| P | L | E | A | S | A | N | T | F | R | U | I | T | T | X | A | P | O |
| G | R | A | P | E | S | X | E | W | R | I | L | K | S | T | M | G | A |

APPLES

DATES

FIGS

GRAPES

MELONS

OLIVES

POMEGRANATES

SYCAMORE FRUIT

SUMMER FRUIT

HASTY FRUIT

PRECIOUS FRUIT

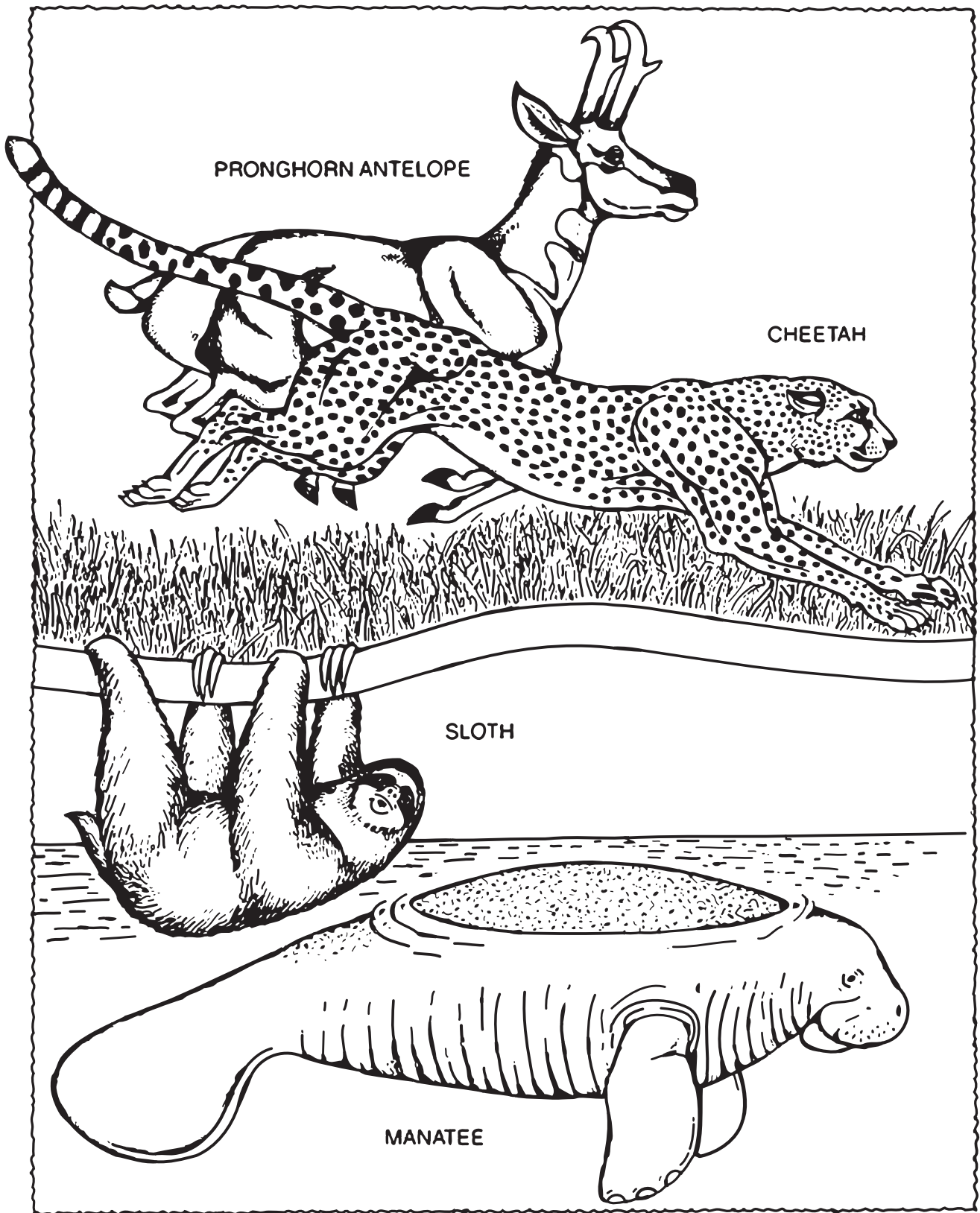
PLEASANT FRUIT

FIRST FRUITS

MANDRAKE

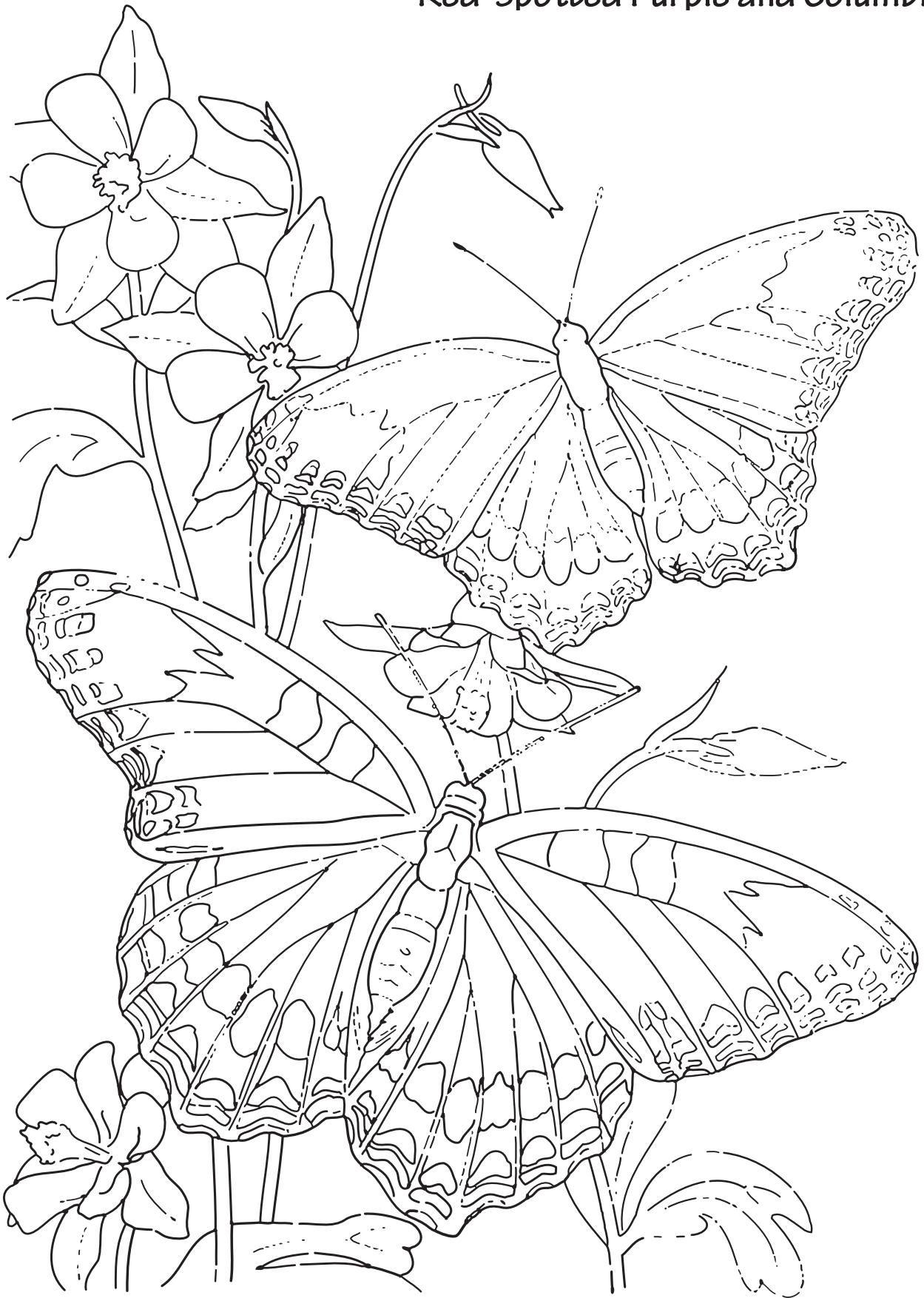


©



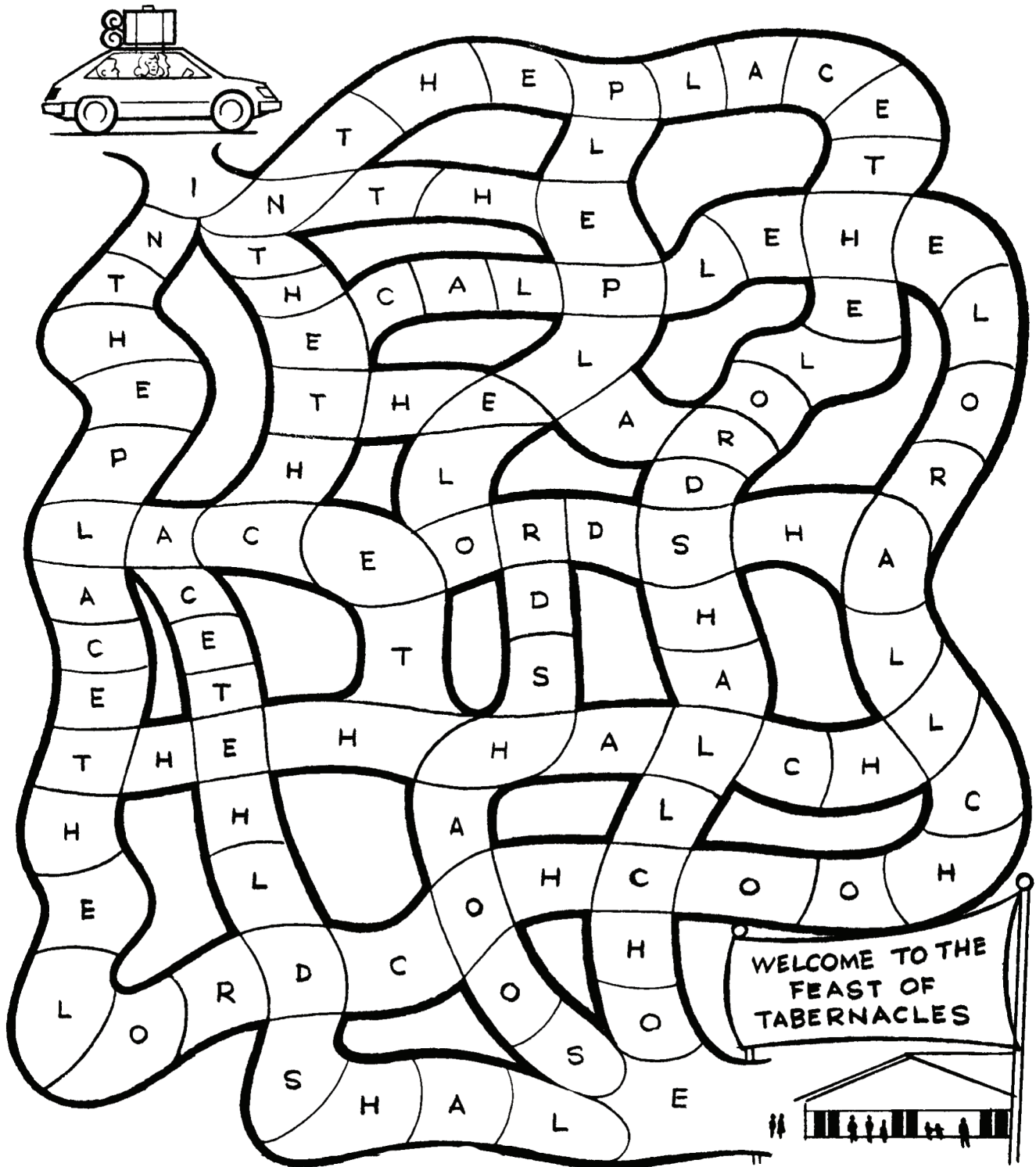
The cheetah and the pronghorn antelope are the two fastest land animals on earth, running an average of sixty miles per hour. Sloths and manatees are among the slowest animals. A sloth can move a little over one mile per hour; manatees average three to five miles per hour. Most of the time, they hardly move at all!

Red-spotted Purple and Columbine



WHERE DO WE KEEP GOD'S FEAST?

In Deuteronomy 16:15 God tells us where we are to keep the Feast of Tabernacles. Color the route that leads to the Feast site and spells out the seven-word answer to the question, "Where do we keep the Feast?"





HOW DID YOU TRAVEL TO THE FEAST?





WHAT ARE THE FAVORITE THINGS YOUR FAMILY
LIKES TO DO DURING THE FEAST?

Temporary Dwellings

Nehemiah 8:14

And they found written in the law which the LORD had commanded by Moses, that the children of Israel should dwell in booths in the feast of the seventh month.

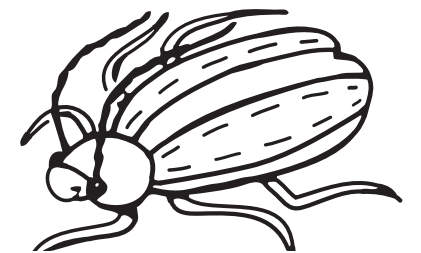
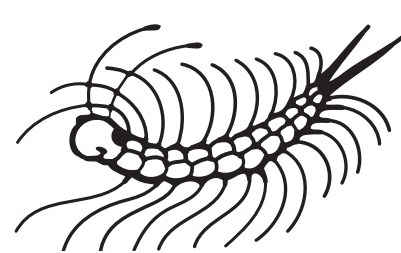
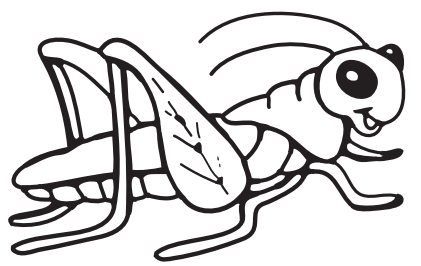
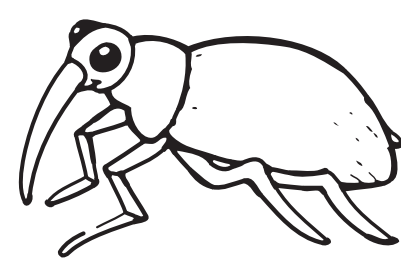
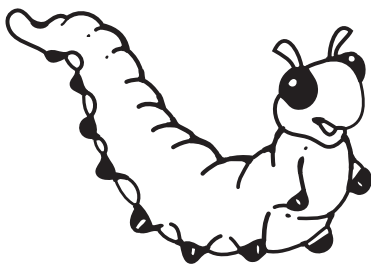
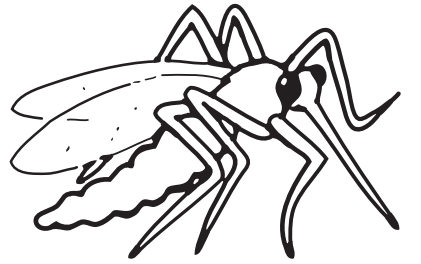
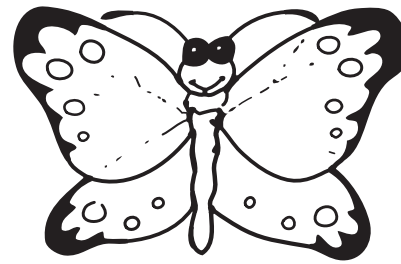
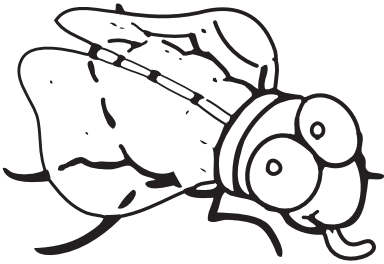
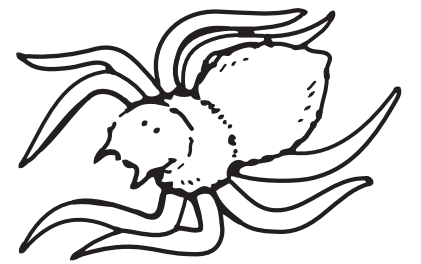
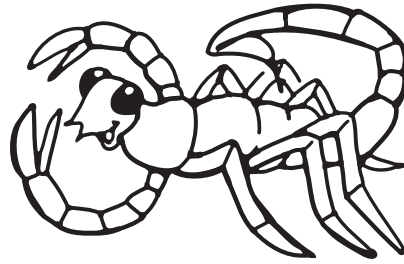
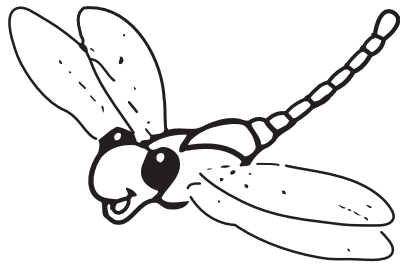
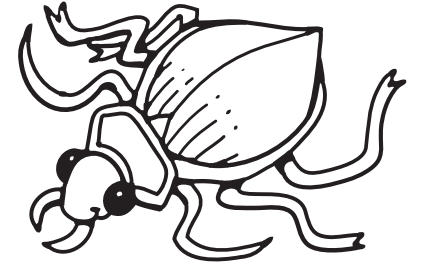
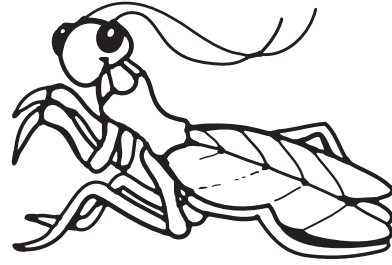
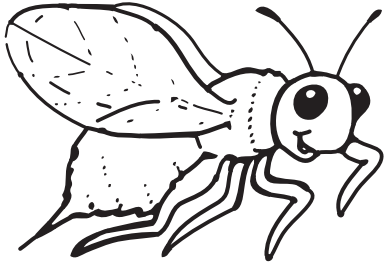
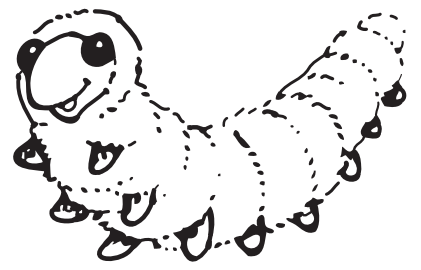
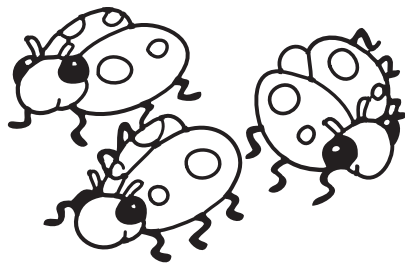
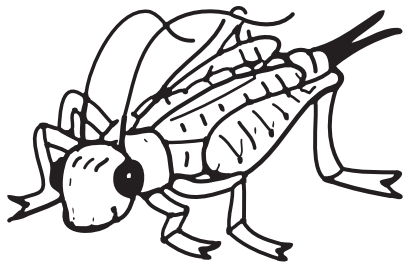
booth: sūkkâh (sook-kaw')

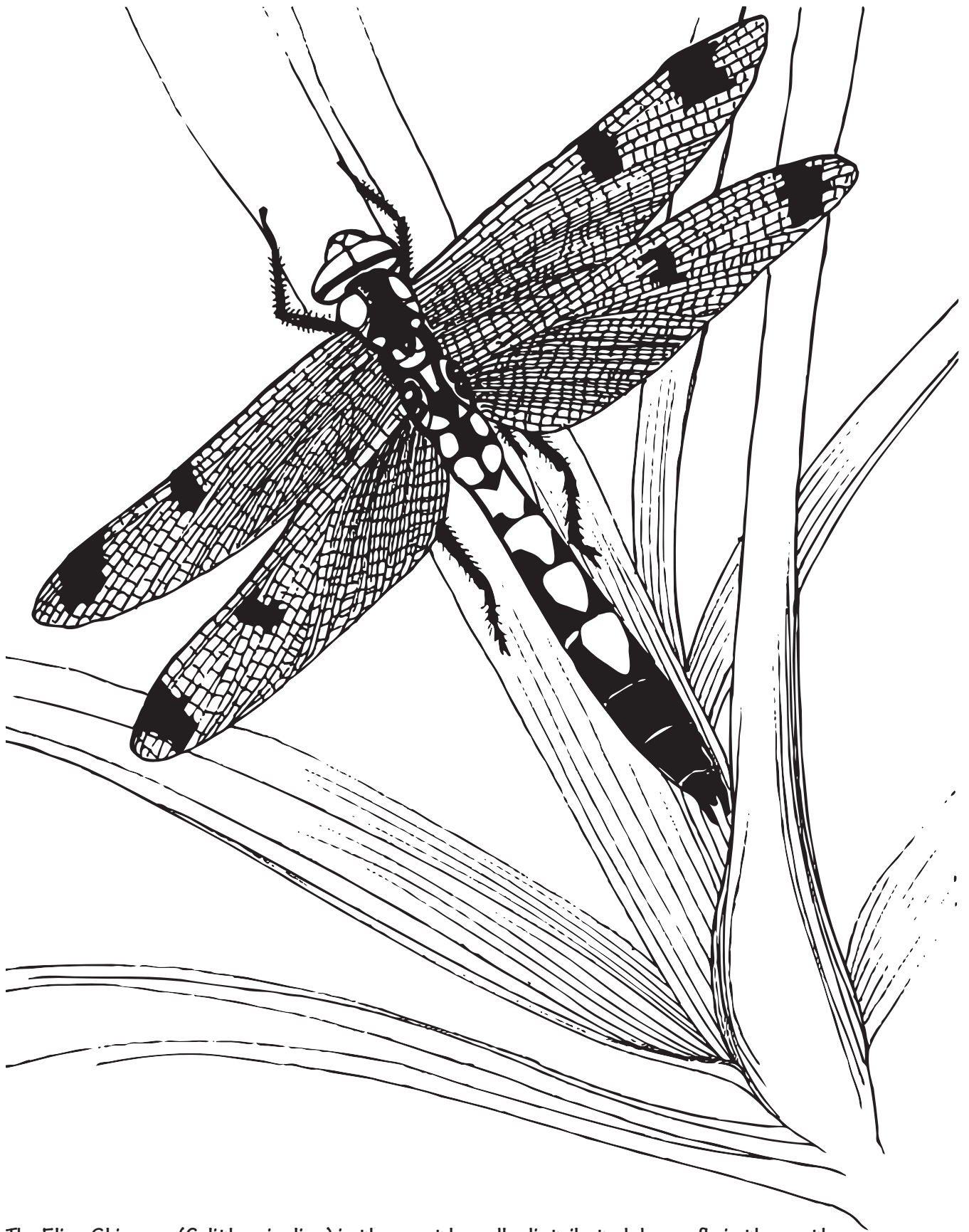
a hut or lair: - booth, cottage, covert, pavilion, tabernacle, tent.



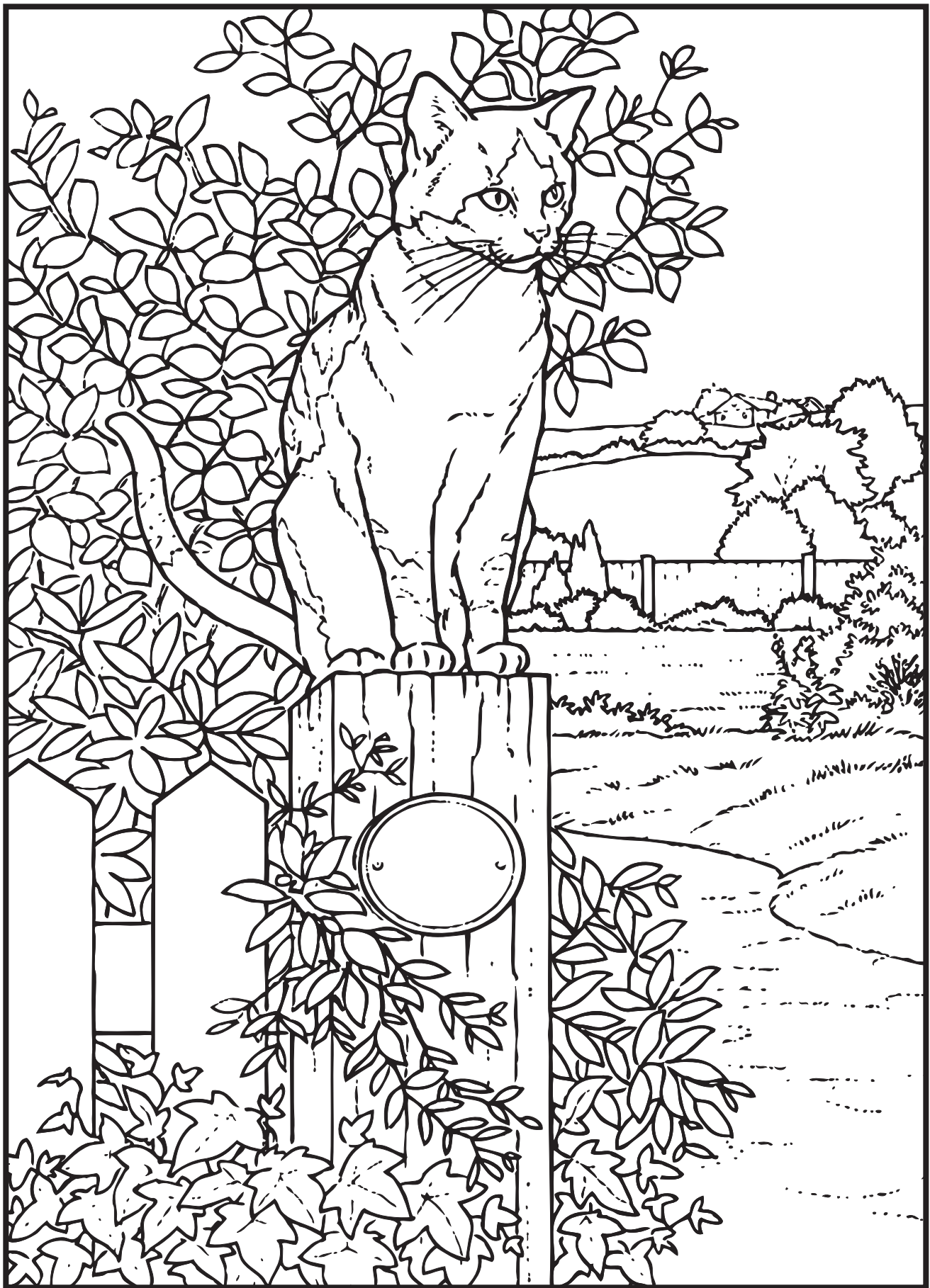
Draw a picture of the temporary place where you are staying during the Feast.

List some other types of temporary dwellings.





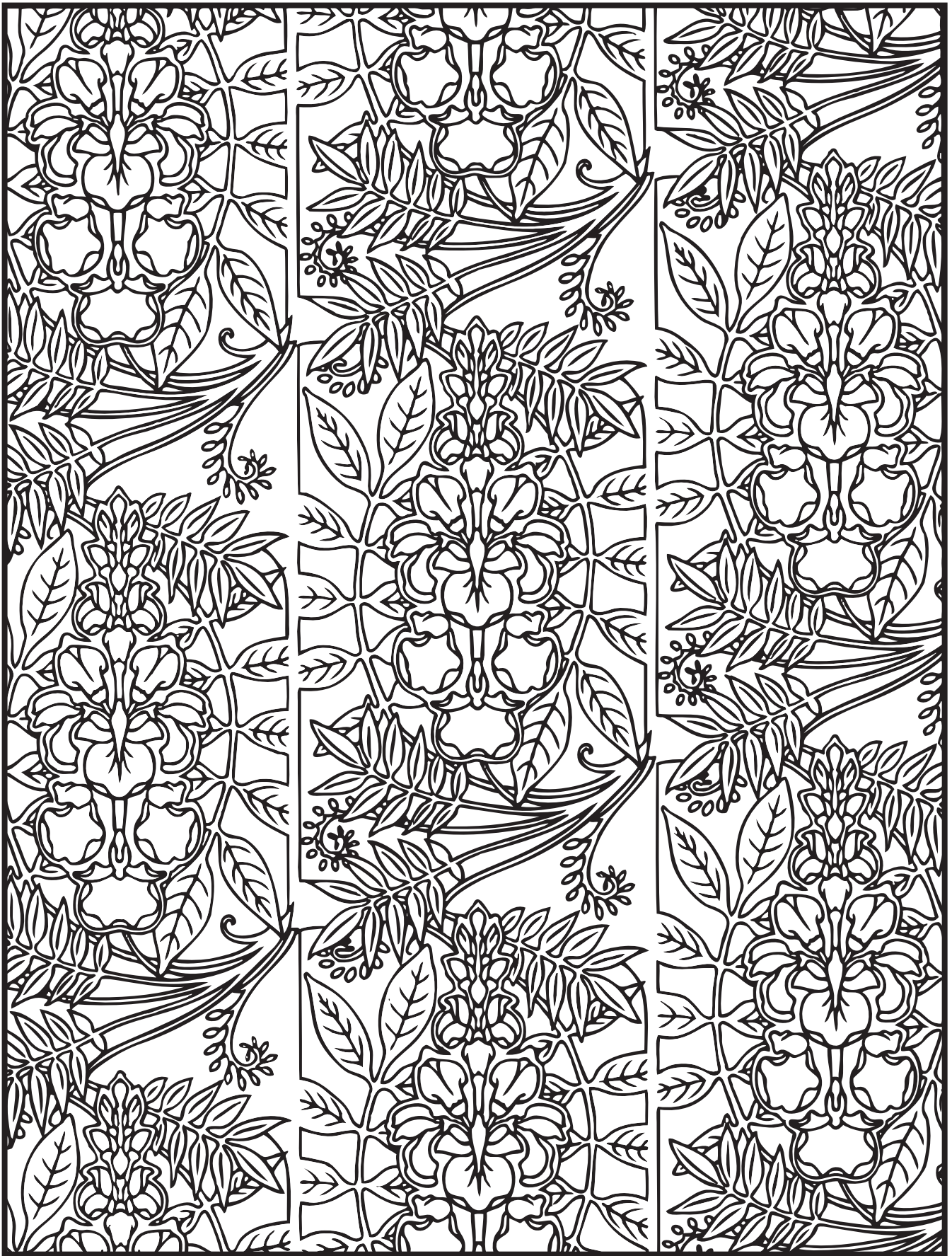
The Elisa Skimmer (*Celithemis elisa*) is the most broadly distributed dragonfly in the northern United States and adjacent Canada. Like other dragonflies, it is associated with bodies of water and eats insects.

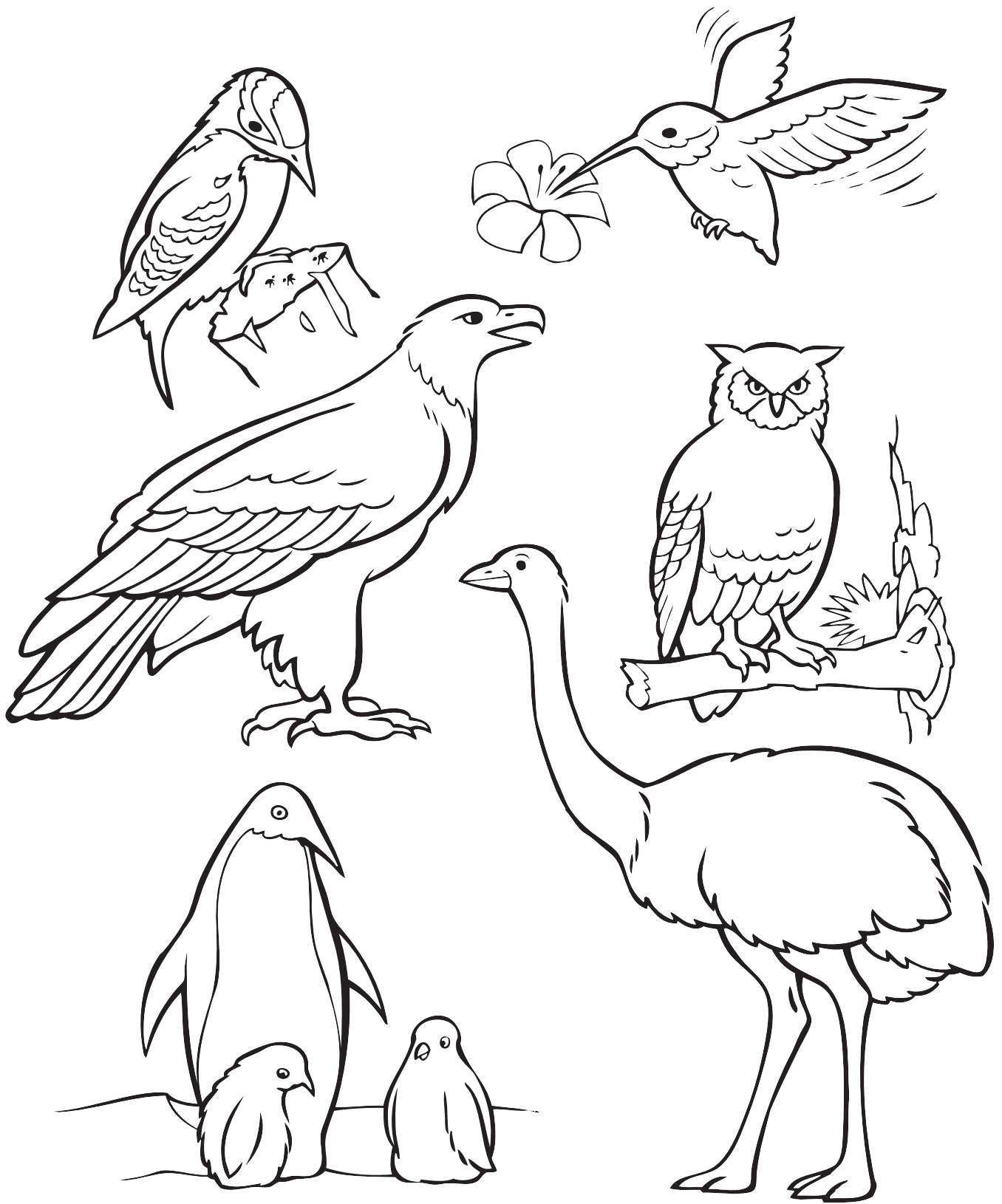




It's easy to spot the large cabbage butterfly perched on the daisy in the center of the page. But look carefully and you will find six smaller cabbage butterflies elsewhere in the picture. Find and outline all six.



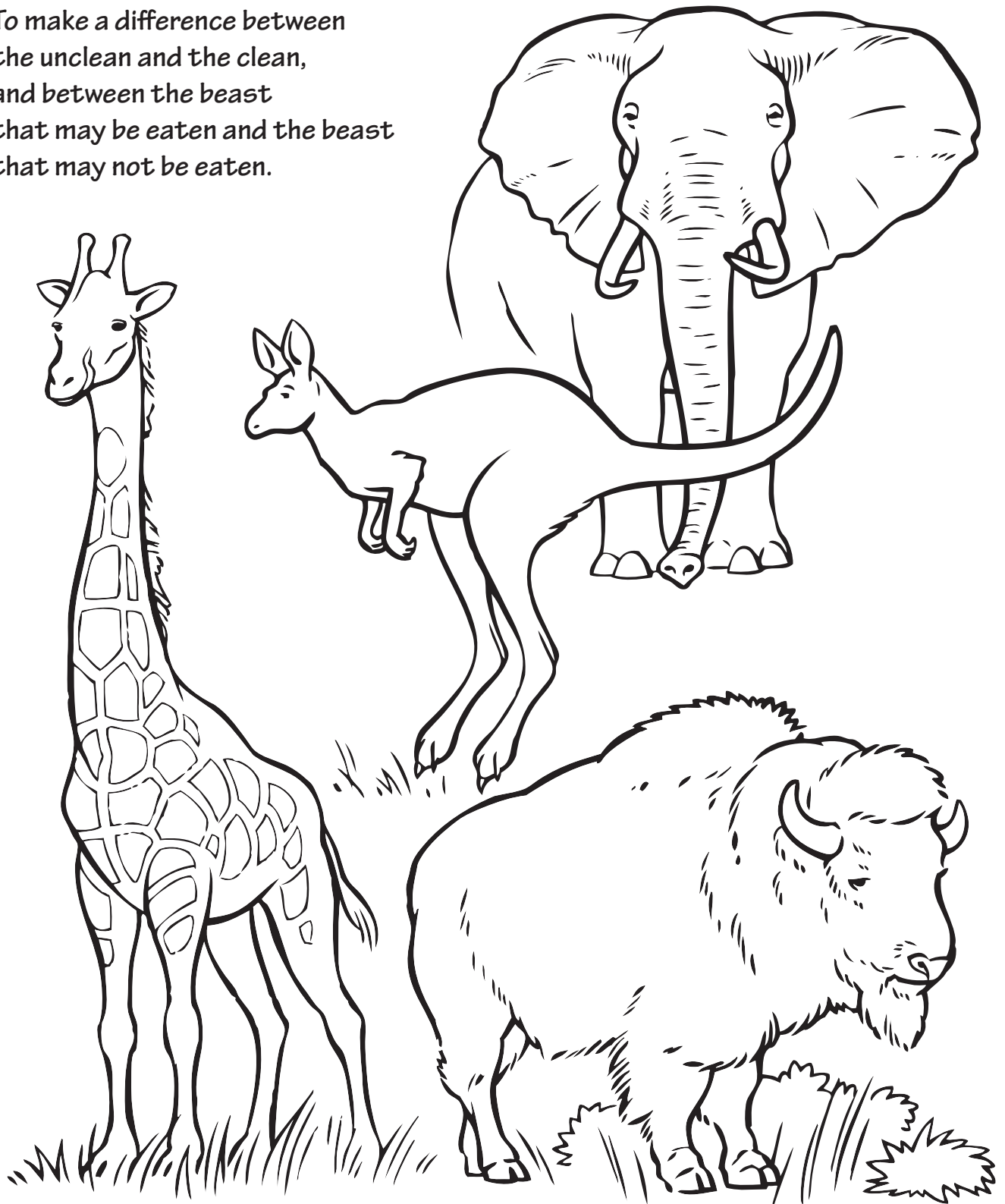




Can you name these birds?

Leviticus 11:47

To make a difference between
the unclean and the clean,
and between the beast
that may be eaten and the beast
that may not be eaten.



Can you name these animals?

Circle the ones that God has declared clean.

PRECIOUS STONES OF NEW JERUSALEM

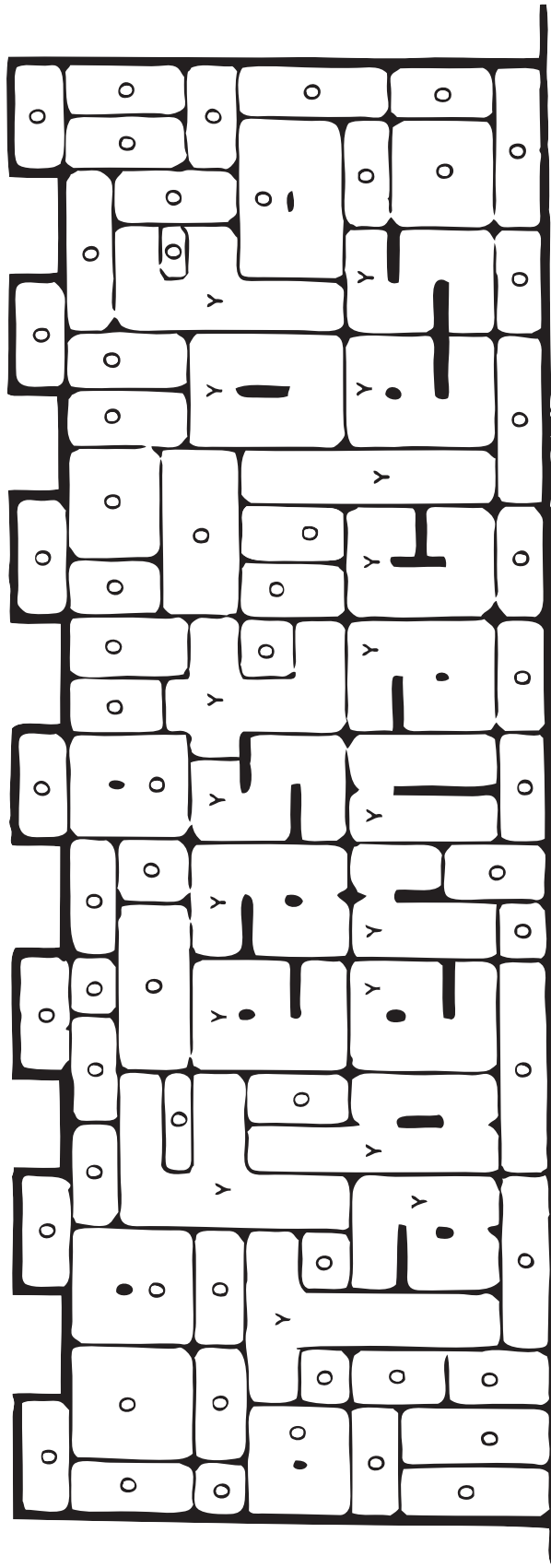
(REV. 22:18-21)

| | | | | | | | | | | | | | | | | | |
|---|---|---|---|---|---|---|---|---|---|---|---|---|---|---|---|---|---|
| B | N | E | D | F | O | I | E | P | T | U | B | R | A | Q | H | M | Y |
| E | Q | F | I | K | N | S | S | O | Y | D | D | L | A | R | E | M | E |
| R | M | U | P | L | Y | A | A | I | H | N | E | O | D | J | F | H | D |
| Y | D | S | U | M | X | L | R | Y | R | B | X | N | W | L | T | C | A |
| L | U | A | T | B | E | K | P | W | L | E | Q | Z | S | A | B | H | K |
| T | I | P | G | D | N | P | O | E | B | M | P | S | N | P | I | R | H |
| B | P | P | N | A | U | T | S | Q | C | U | P | S | K | F | X | Y | O |
| A | N | H | K | A | T | R | Y | T | I | Z | B | G | A | T | N | S | P |
| M | C | I | L | Y | J | E | R | Y | O | N | H | U | G | J | B | O | I |
| E | X | R | F | R | I | Y | H | U | A | Q | A | X | H | R | V | L | M |
| T | A | E | G | U | K | D | C | I | D | T | J | M | D | T | C | O | B |
| H | J | C | H | W | R | I | L | H | L | J | A | Z | N | U | D | T | C |
| Y | Y | S | D | O | P | E | C | D | O | A | C | U | A | I | E | E | S |
| S | R | N | A | L | N | D | V | F | G | T | I | L | Y | P | R | E | L |
| T | A | X | B | R | L | G | B | U | E | C | N | I | M | V | O | Y | R |
| M | H | Q | A | H | A | T | N | A | R | X | T | V | O | B | P | T | A |
| V | M | C | Z | N | U | E | M | V | U | A | H | Y | G | X | L | R | E |
| G | O | Y | M | V | T | X | E | W | P | I | L | K | V | T | M | V | P |

PURE GOLD
 JASPER
 SAPPHIRE
 AGATE
 EMERALD

ONYX
 CARNELIAN
 CHRYSOLOTE
 BERYL
 TOPAZ

CHRYSOPRASE
 JACINTH
 AMETHYST
 PEARLS



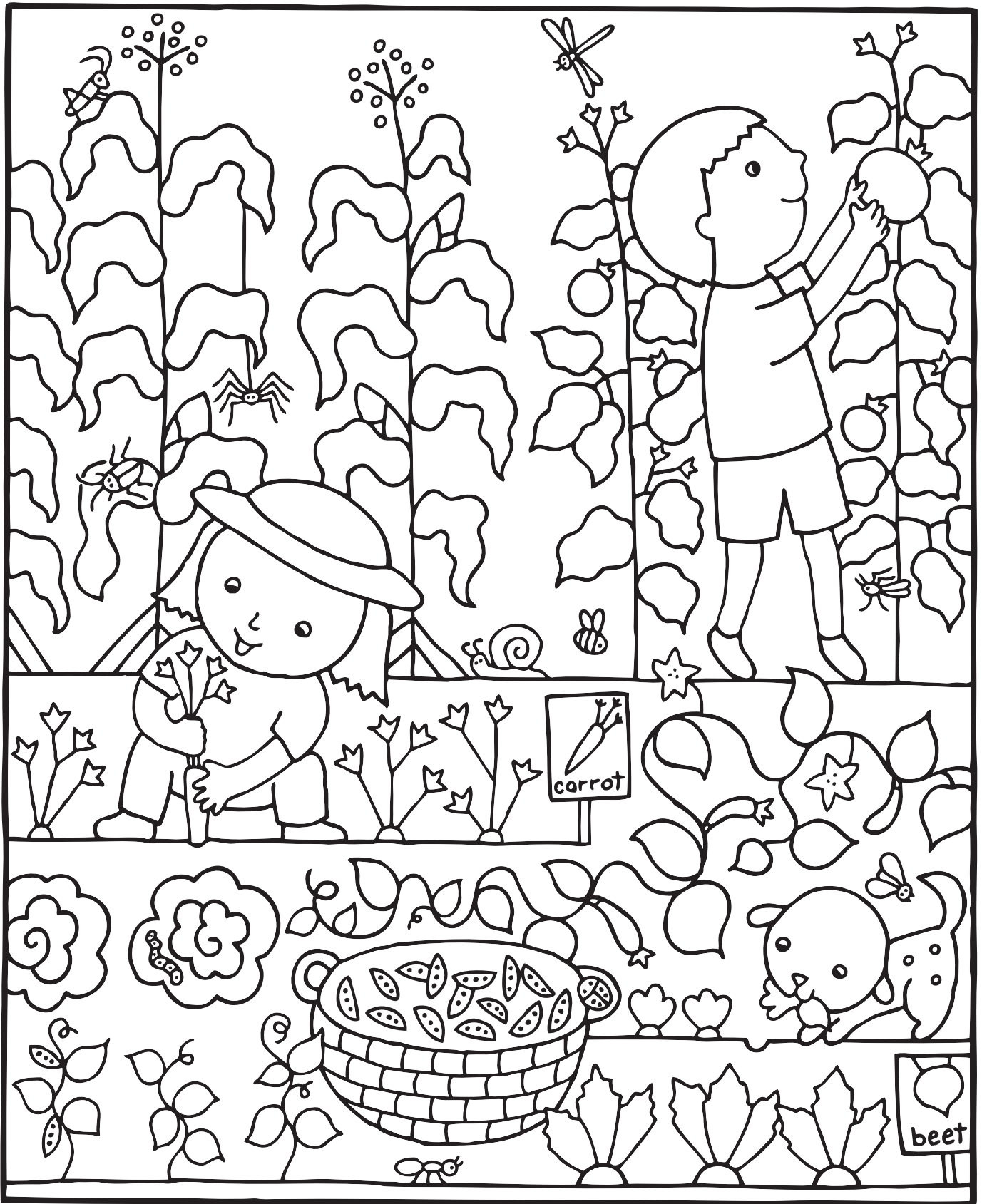
Color the stones in the wall to see where you are.

O= orange

Y=yellow

My Favorite Things To Do At The Feast





Sam picks a red ripe tomato. Lucy pulls up a big orange carrot.
What kinds of vegetables do you think will be grown during the Millennium?

The Millennium Will Last 1,000 Years

How many tens make 100? 10? That's right.



Now take another 10 tens, then another 10 tens. Do this 10 times.

| | | | | | | | | | | |
|--------------|----|----|----|----|----|----|----|----|----|-------------|
| 10 | 10 | 10 | 10 | 10 | 10 | 10 | 10 | 10 | 10 | = 100 |
| 10 | 10 | 10 | 10 | 10 | 10 | 10 | 10 | 10 | 10 | = 100 |
| 10 | 10 | 10 | 10 | 10 | 10 | 10 | 10 | 10 | 10 | = 100 |
| 10 | 10 | 10 | 10 | 10 | 10 | 10 | 10 | 10 | 10 | = 100 |
| 10 | 10 | 10 | 10 | 10 | 10 | 10 | 10 | 10 | 10 | = 100 |
| 10 | 10 | 10 | 10 | 10 | 10 | 10 | 10 | 10 | 10 | = 100 |
| 10 | 10 | 10 | 10 | 10 | 10 | 10 | 10 | 10 | 10 | = 100 |
| 10 | 10 | 10 | 10 | 10 | 10 | 10 | 10 | 10 | 10 | = 100 |
| 10 | 10 | 10 | 10 | 10 | 10 | 10 | 10 | 10 | 10 | = 100 |
| 10 | 10 | 10 | 10 | 10 | 10 | 10 | 10 | 10 | 10 | = 100 |
| | | | | | | | | | | <hr/> |
| Total | | | | | | | | | | 1000 |

Now you have 1,000. One thousand years is a long time, isn't it?

GEORGIA



State Bird: Brown Thrasher
State Flower: Cherokee Rose

GEORGIA STATE FACTS

| | |
|--------------------|--|
| Abbreviation: | GA |
| Capital: | Atlanta |
| Governor: | Nathan Deal (Republican, to January 2015) |
| Entered the Union: | January 2, 1788 as the 4th state |
| Motto: | Wisdom, justice, and moderation |
| Nicknames: | The Peach State, The Empire State of the South |
| Flower: | Cherokee Rose |
| Bird: | Brown Thrasher |

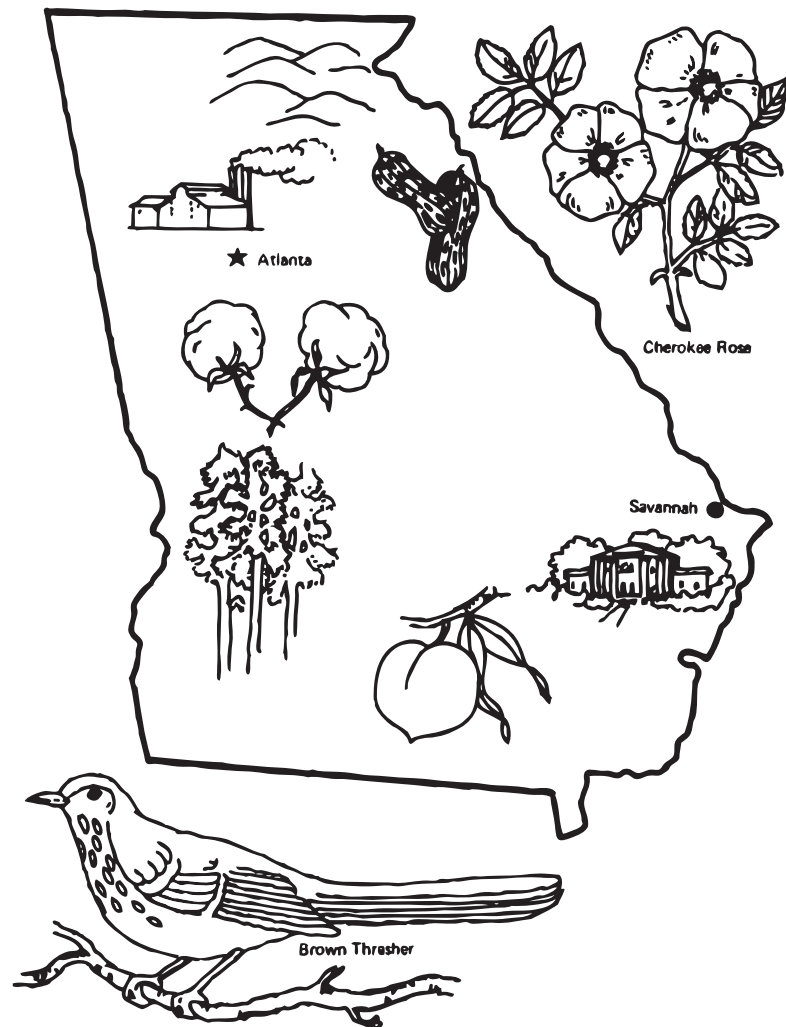
Song: *Georgia on My Mind*,
Written by: *Stuart Gorrell*,
Composed by: *Hoagy Carmichael*

Origin of Name: In honor of
George II of England

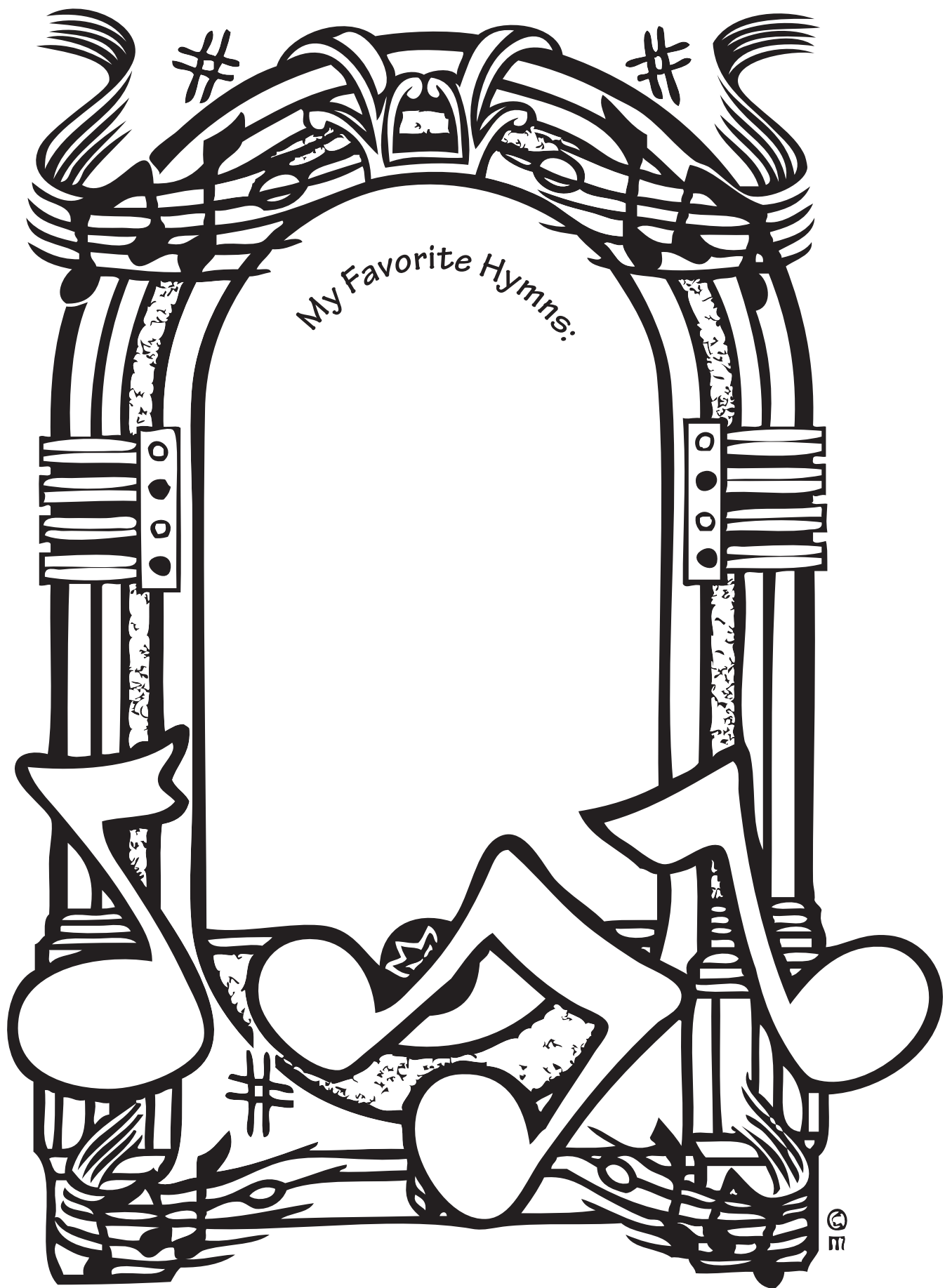
Bordering States:
Georgia borders
South Carolina, Florida,
Alabama, Tennessee,
North Carolina

Georgia produces nearly
40 percent of the nation's pea-
nut supply.

Did you know *Dahlonega* was the
site of the first gold rush in the
U.S.? In 1828, people from all
over the country flocked to the
Georgia Mountains to search
for gold. This was 20 years prior
to the gold rush in *California*,
giving *Dahlonega* its nickname as
Georgia's "Golden City".



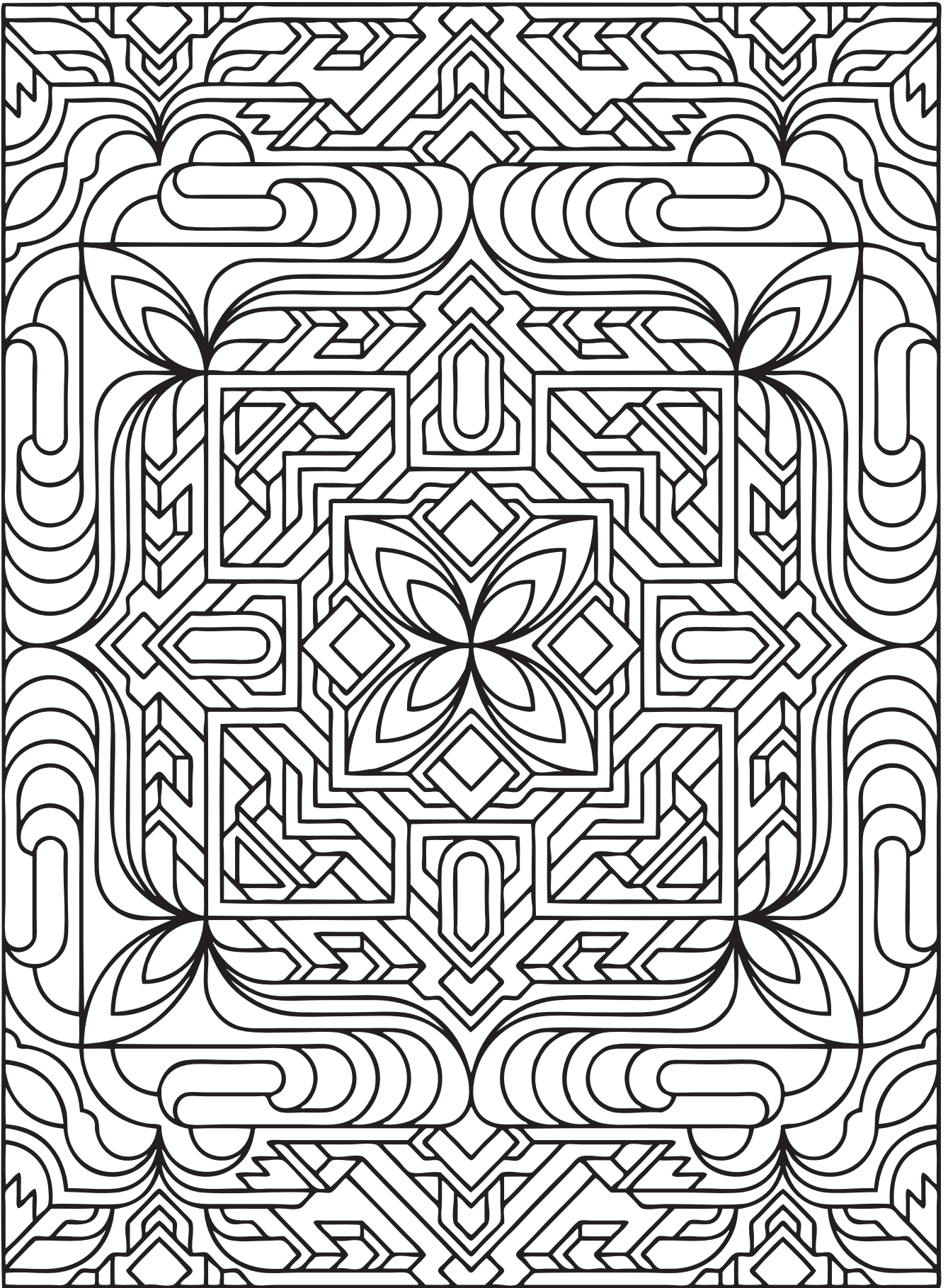
Georgia Peach State

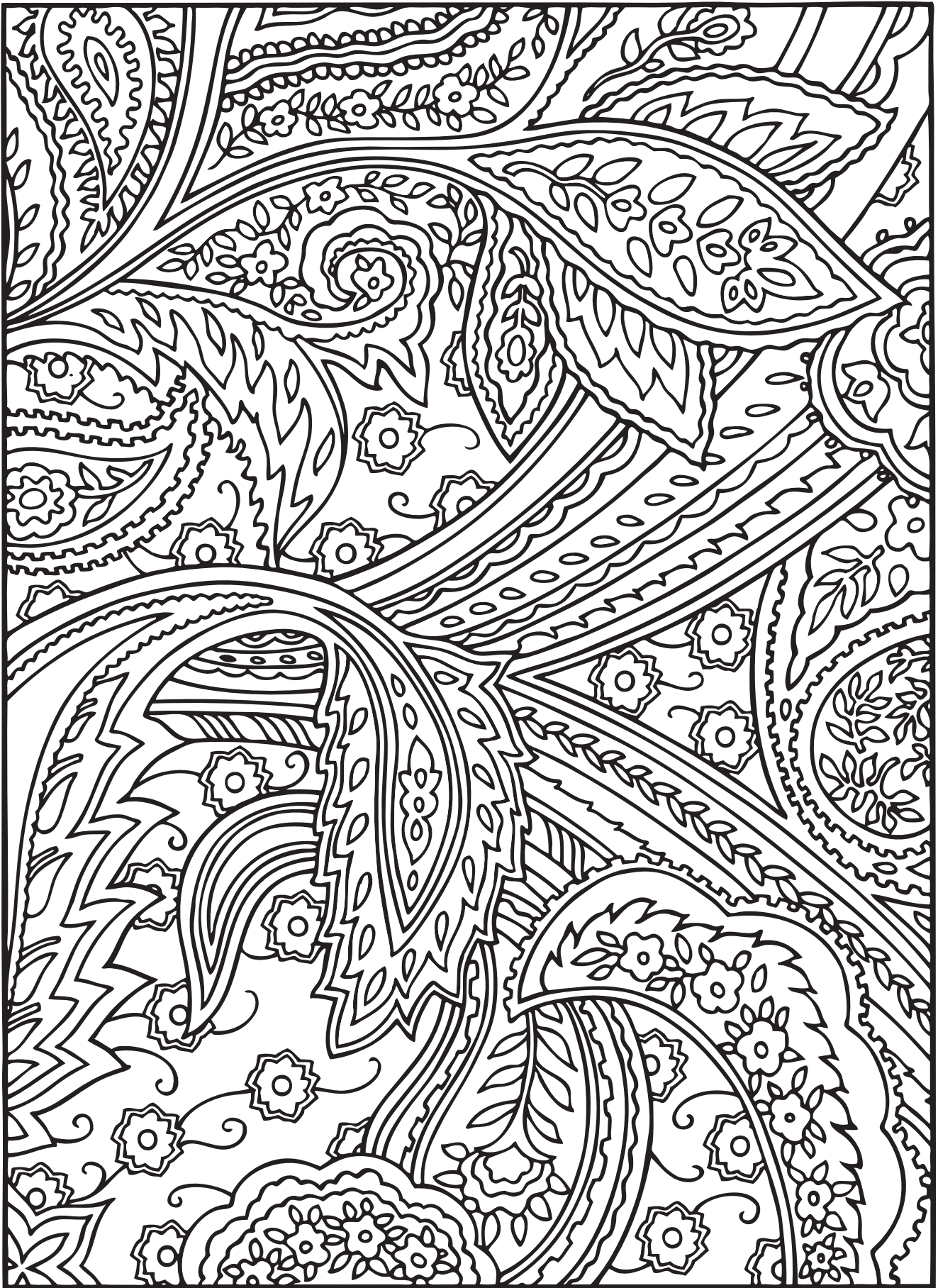


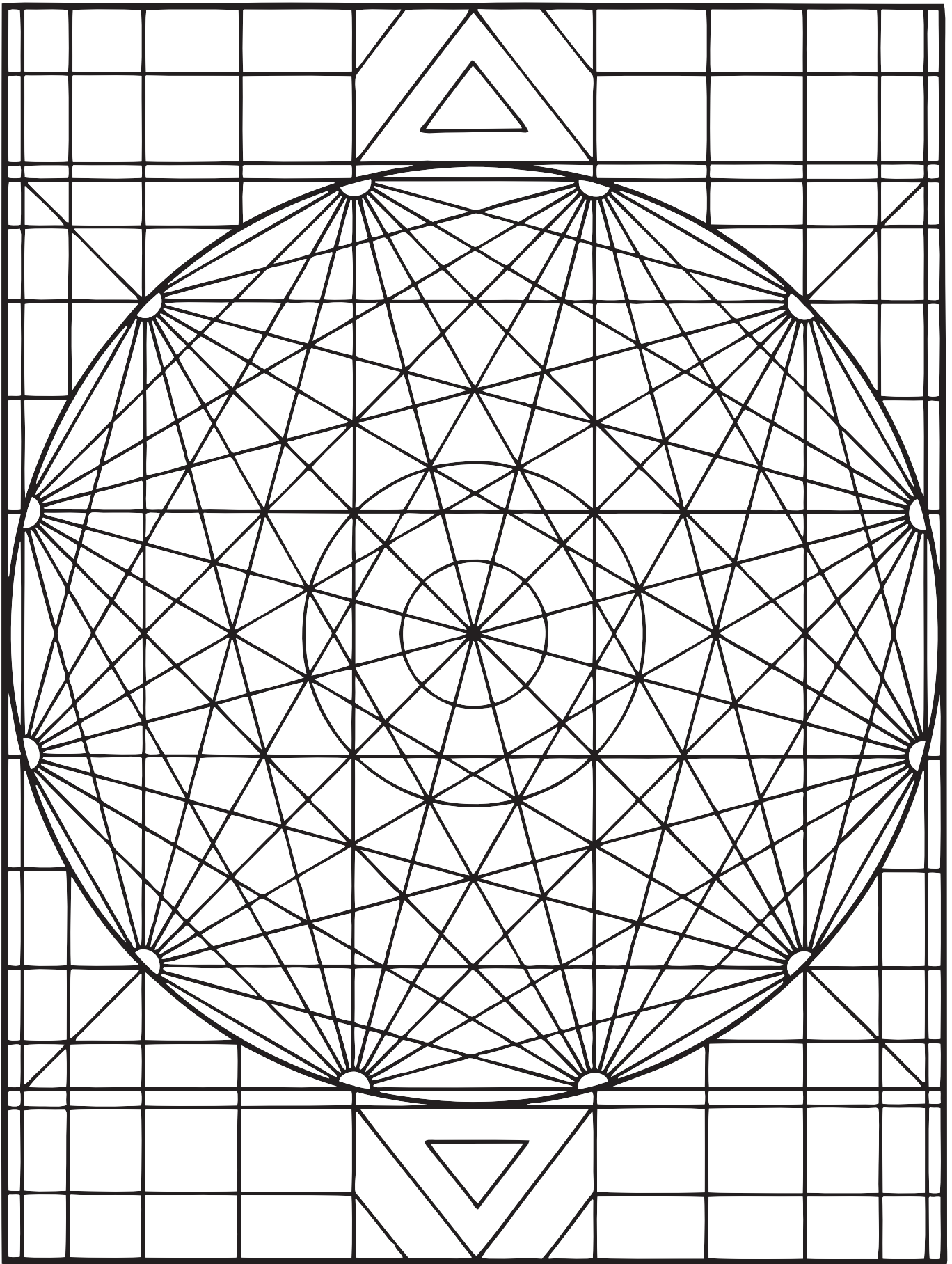
©
M

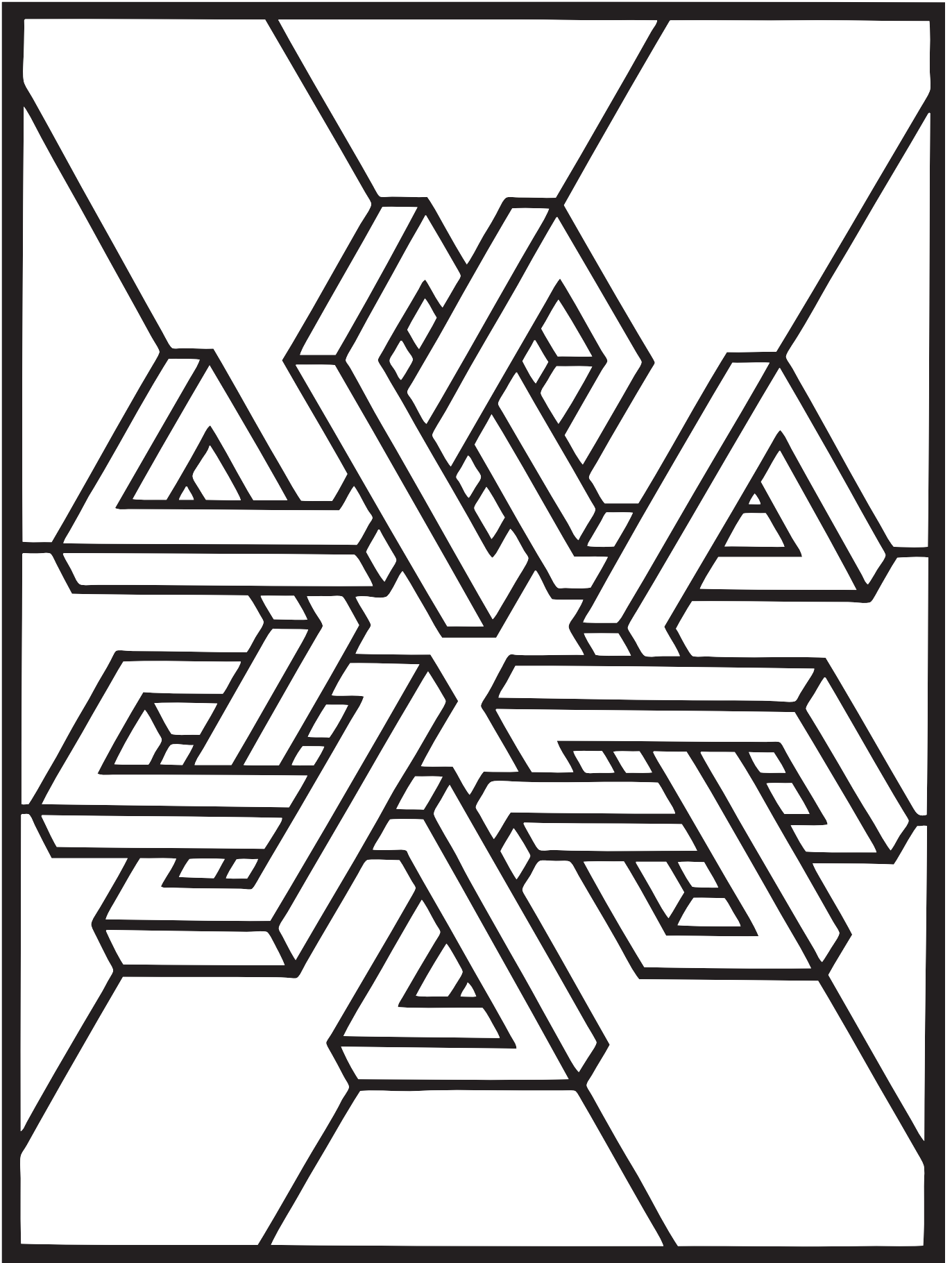
Create a Song







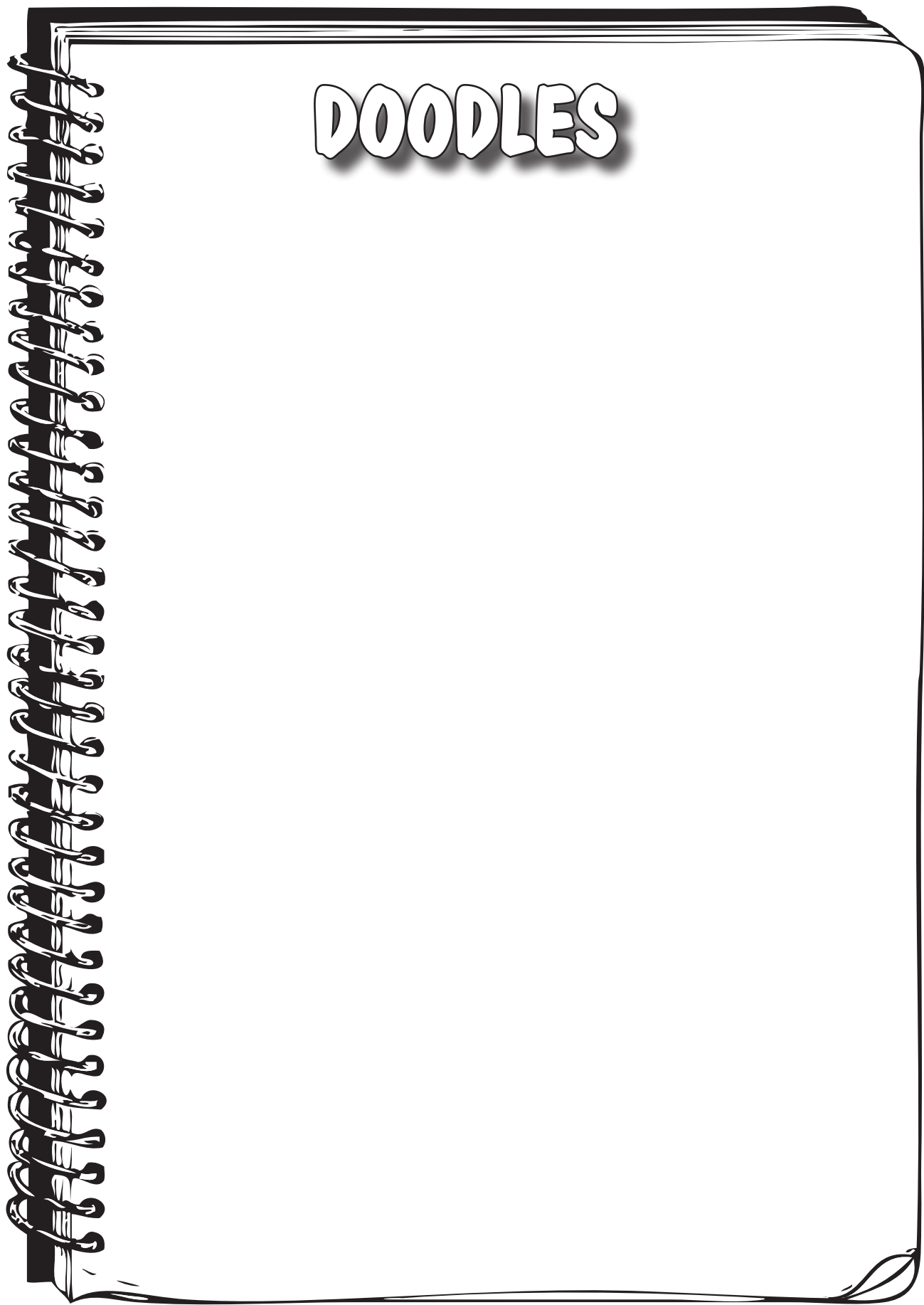


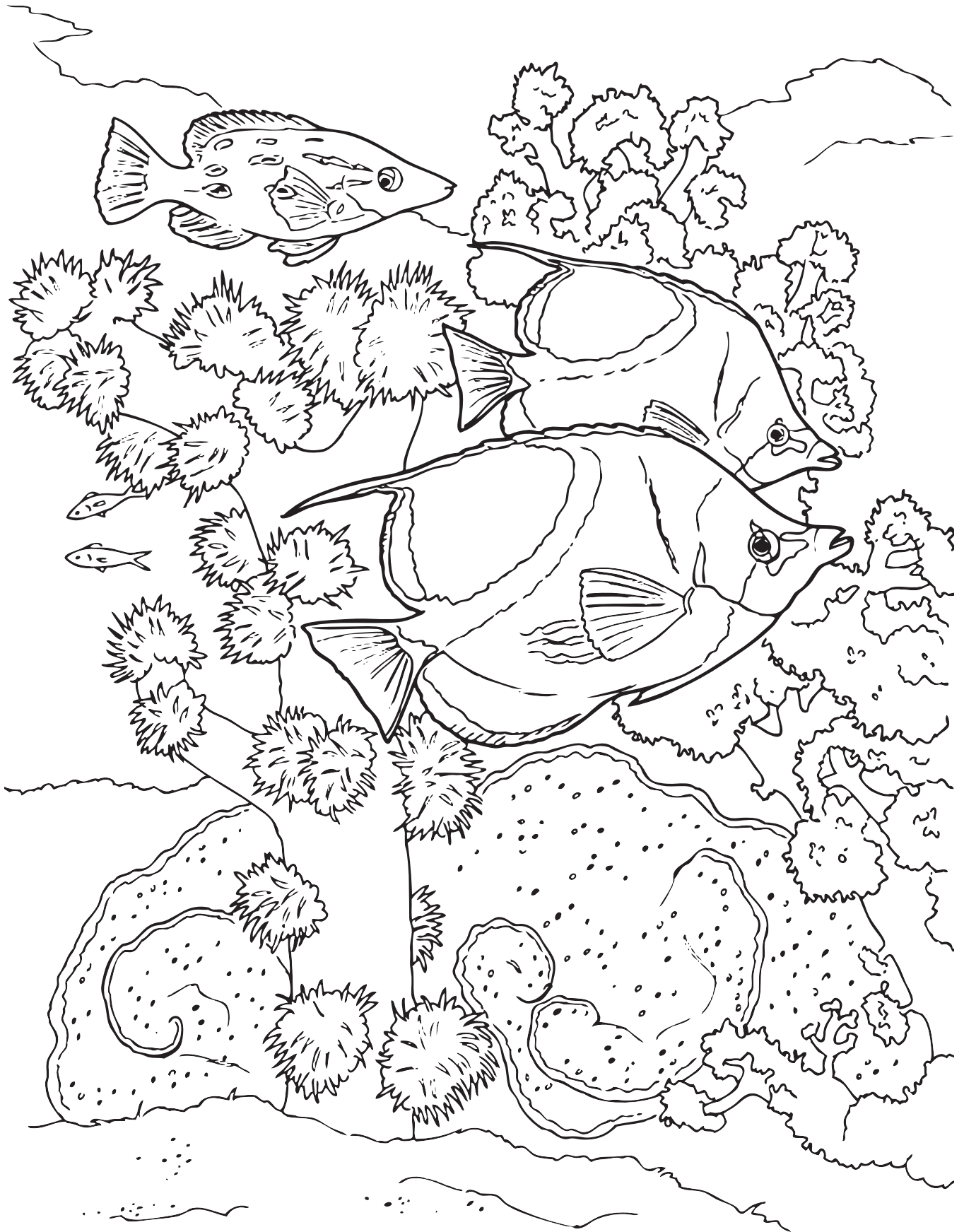


DOODLES



DOODLES

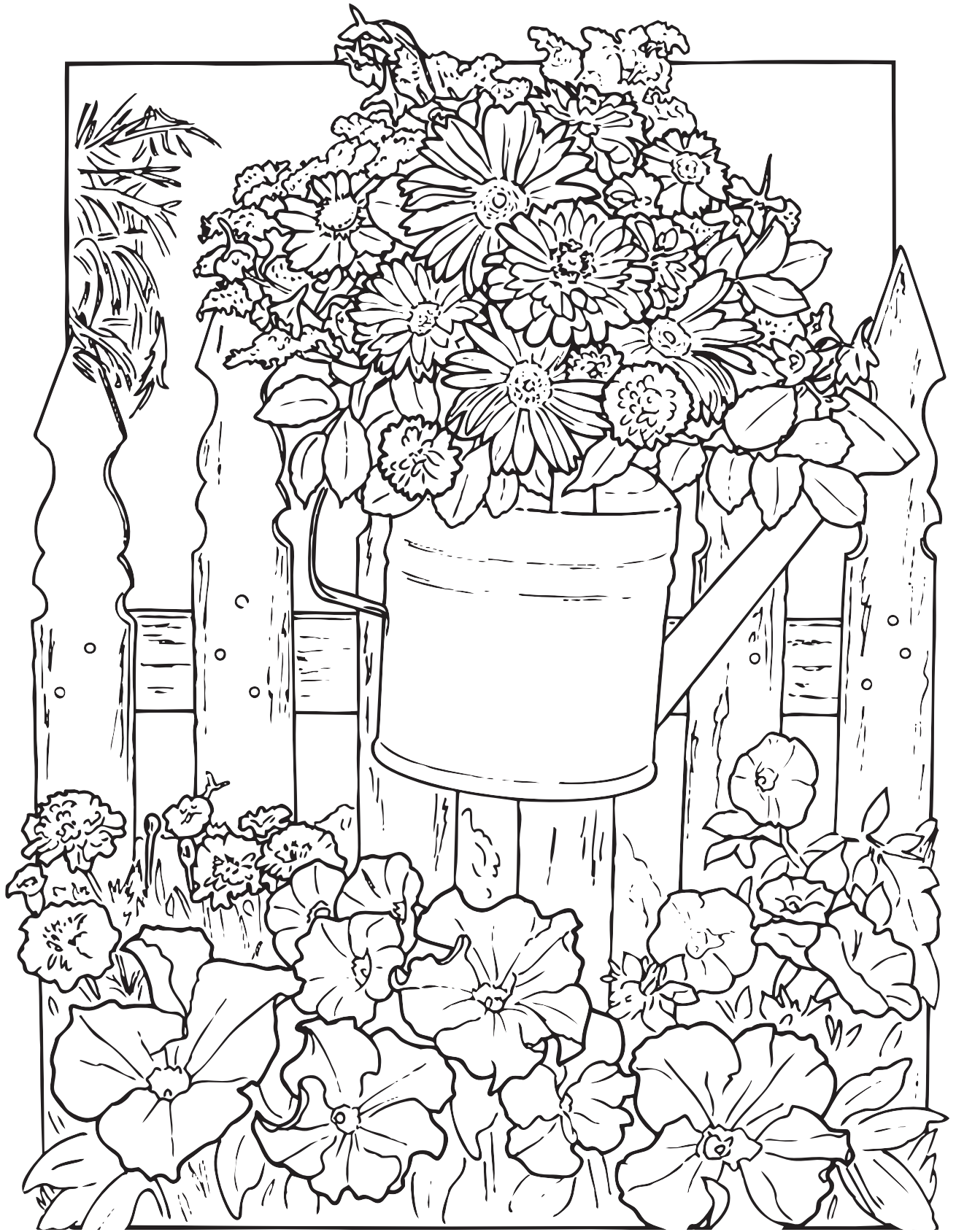


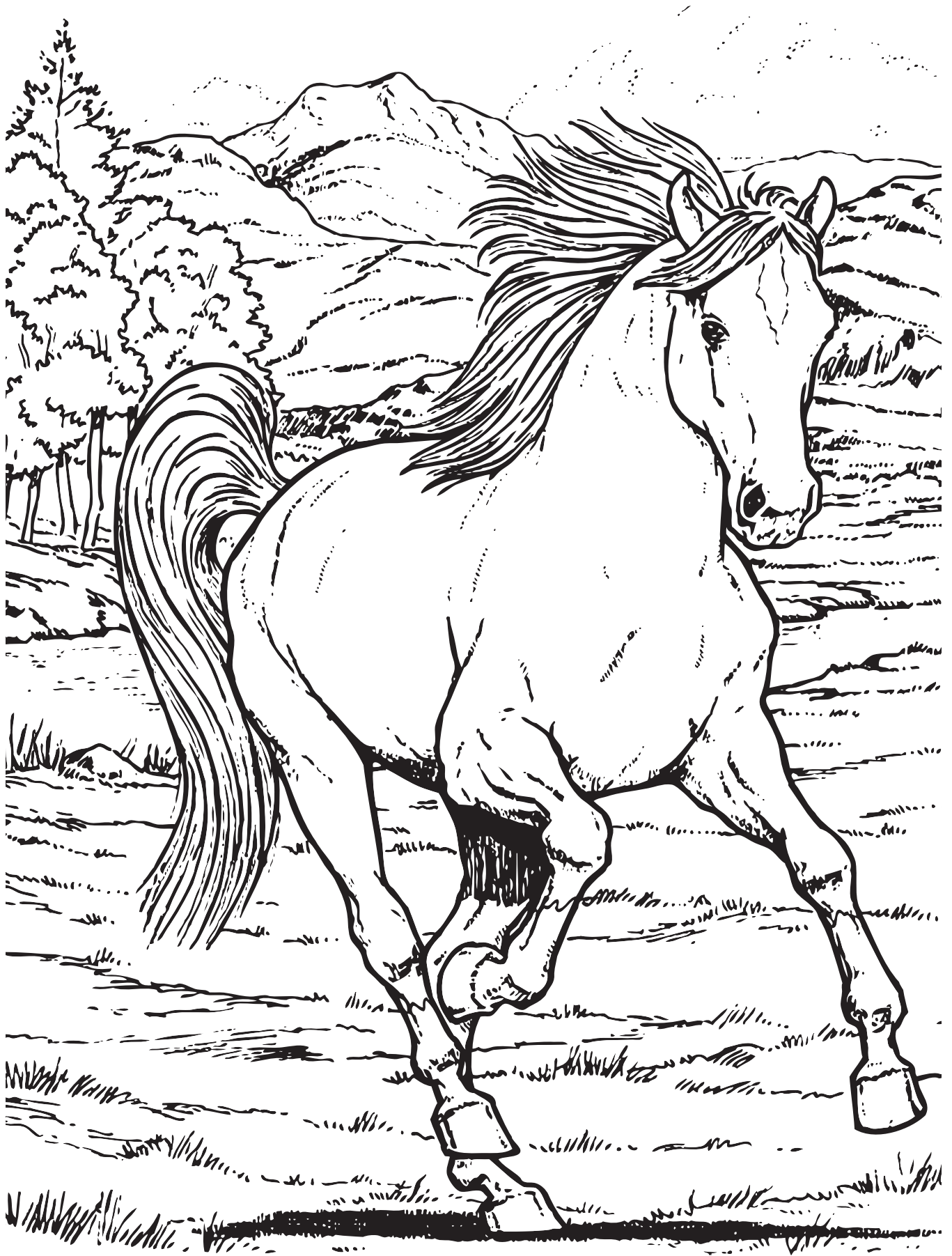


Red-eyed tree frog

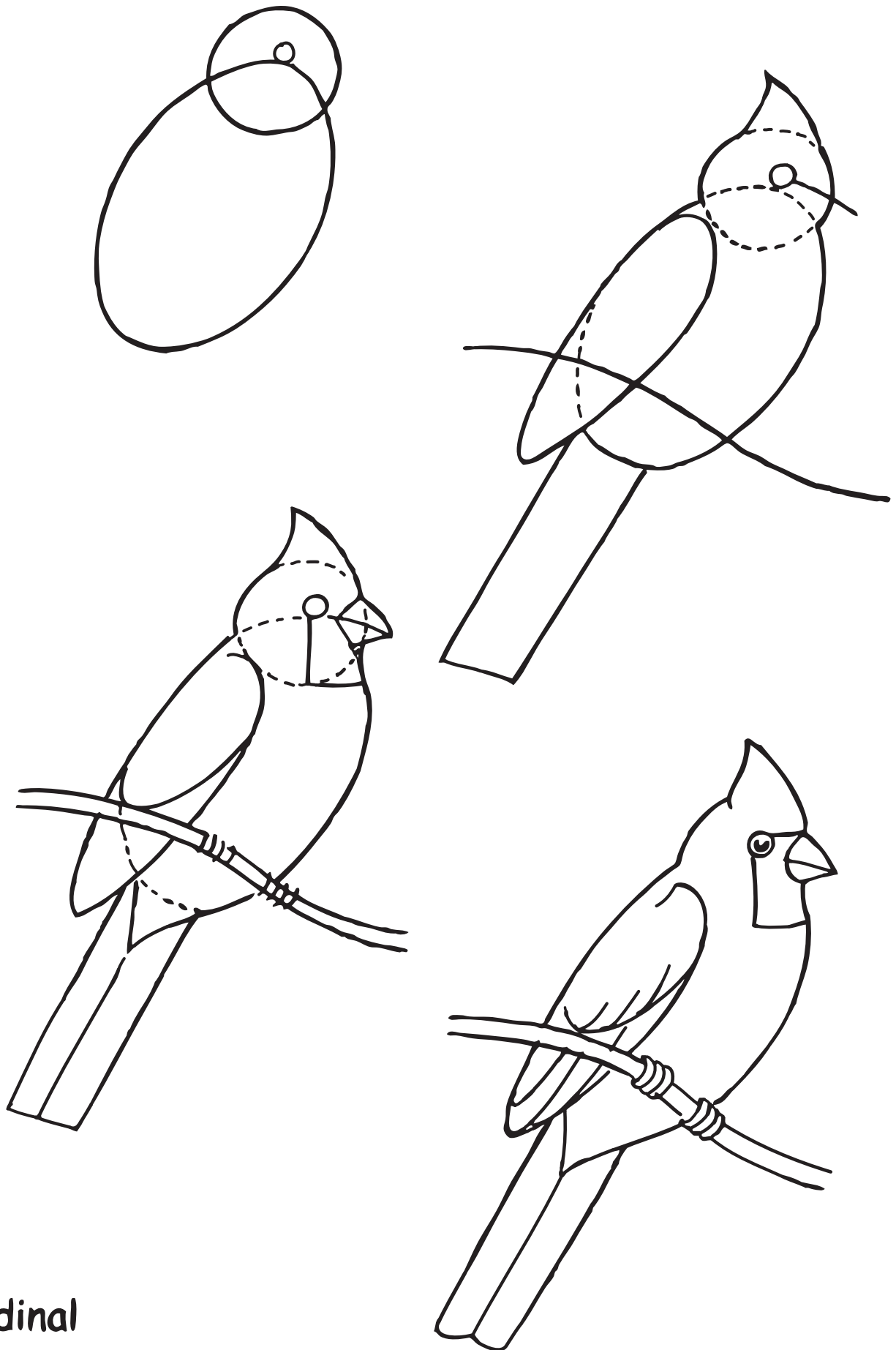








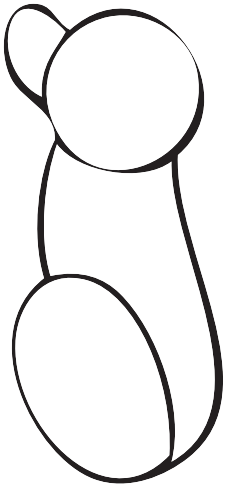




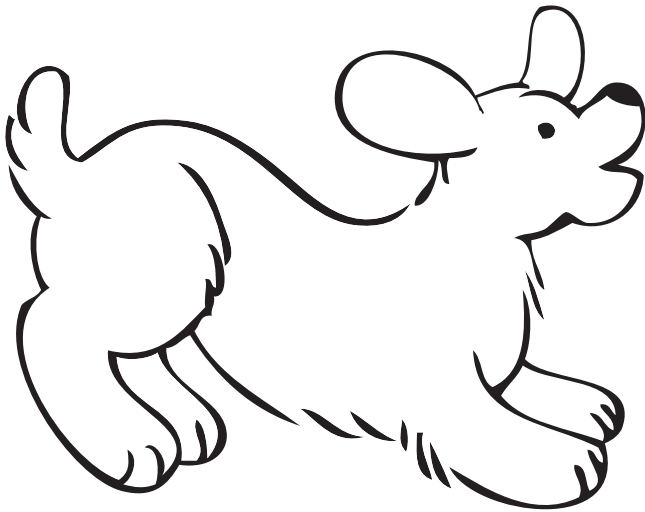
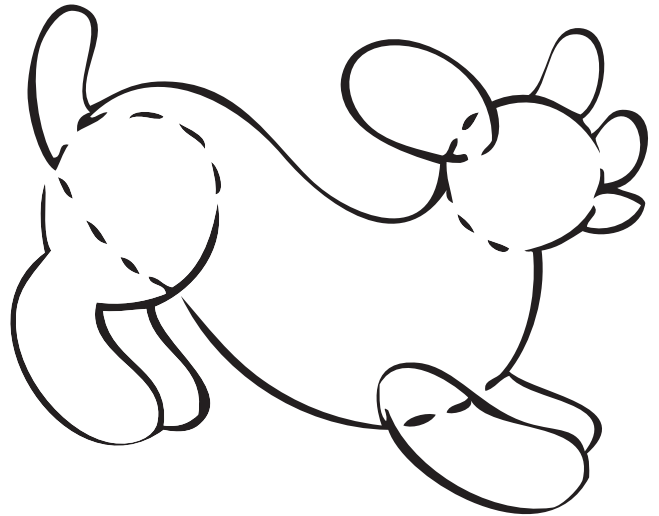
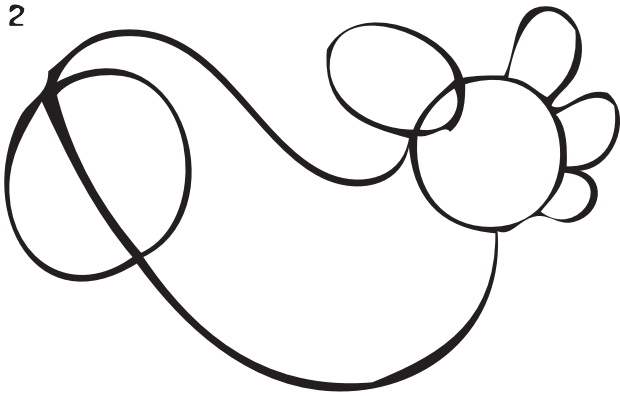
Cardinal
49

DRAW SOME COLORFUL BIRDS

1

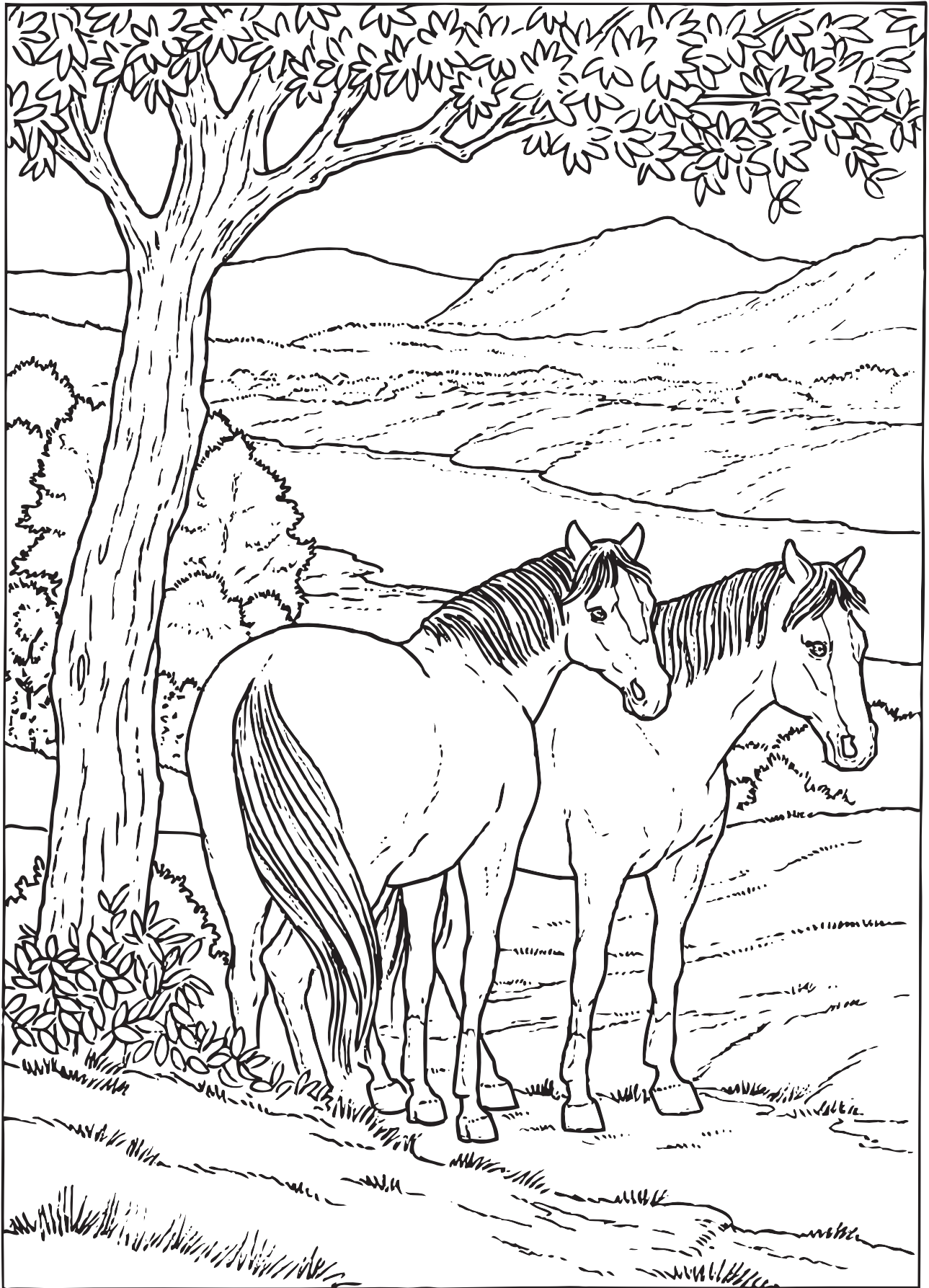


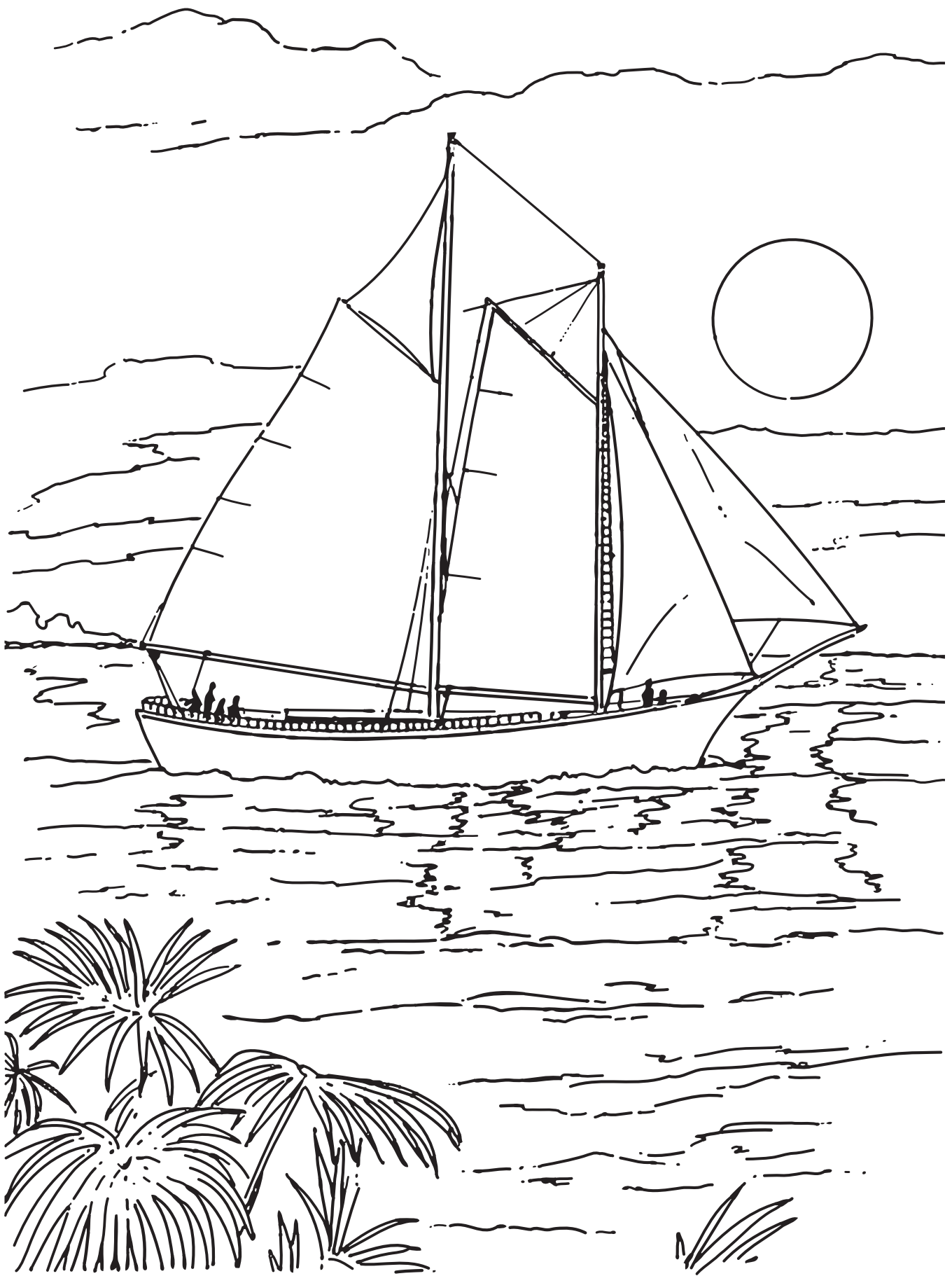
2



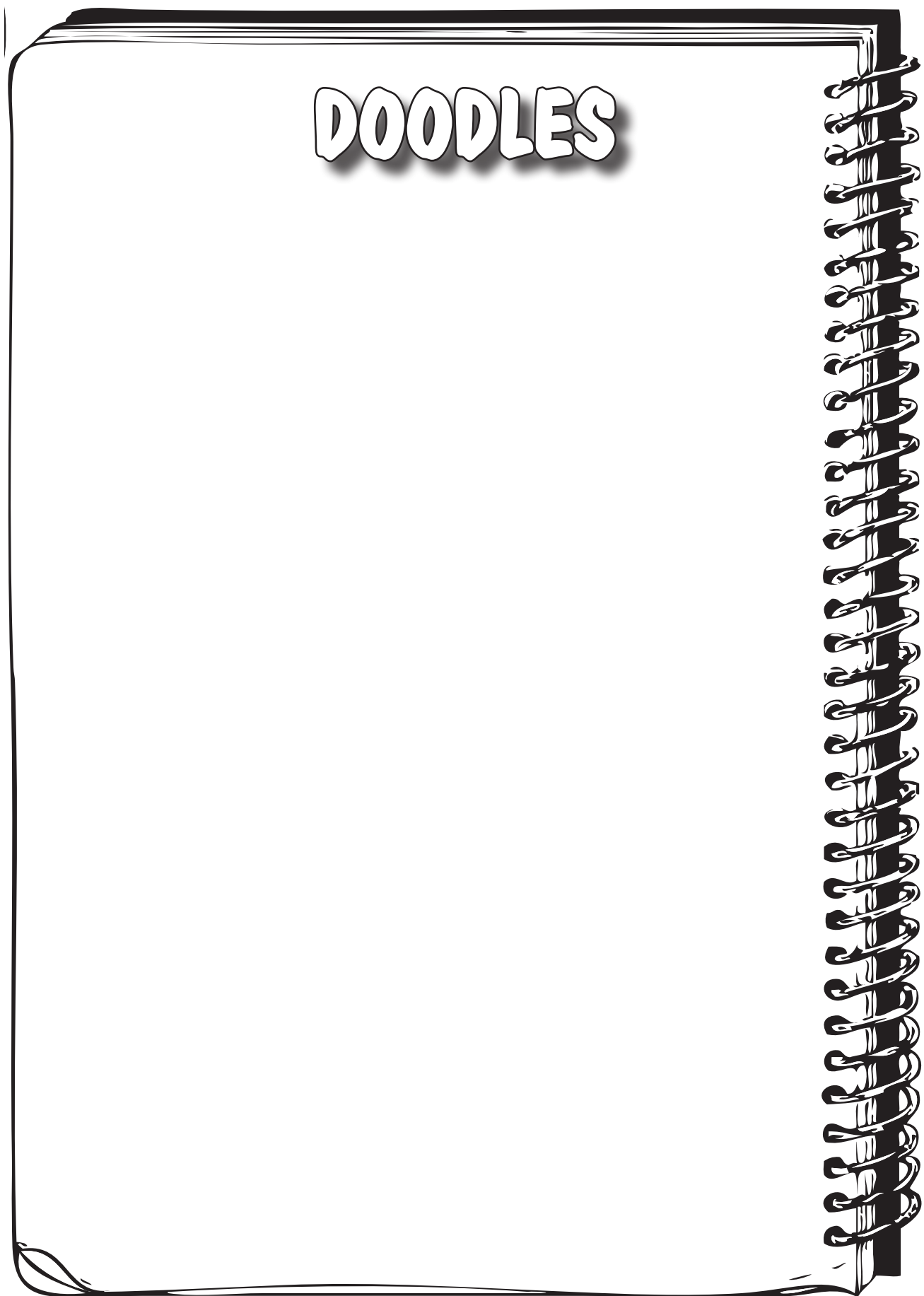
Puppies

DRAW YOUR FAVORITE ANIMALS

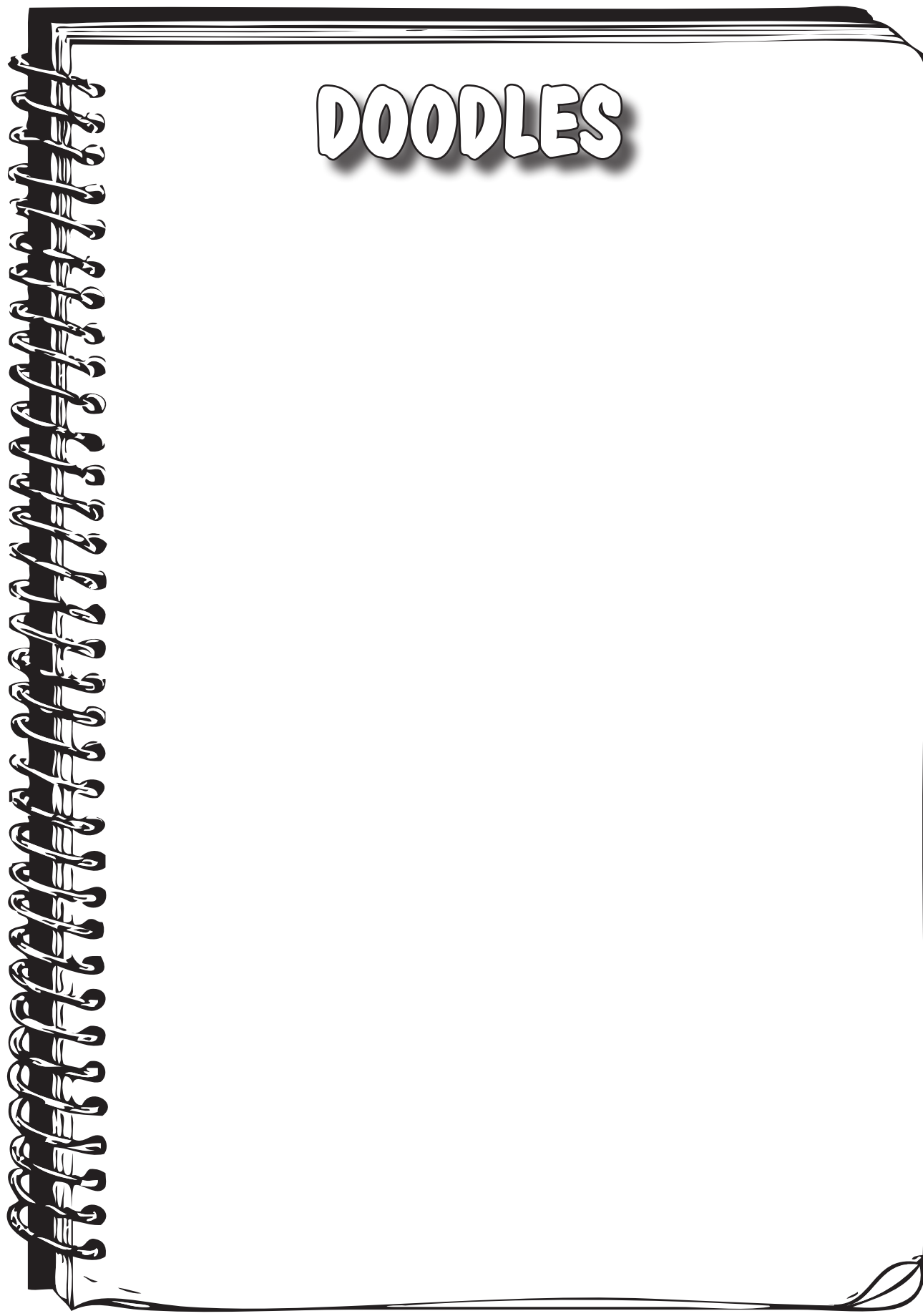




DOODLES



DOODLES



SCRAPBOOK

A black and white line drawing of a scrapbook cover. The cover is rectangular with a thick black border. At the top, there are two black rectangular tabs. The word "SCRAPBOOK" is written in a large, bold, bubbly font with a drop shadow effect. The bottom-left corner is folded over, showing the reverse side of the cover.

SCRAPBOOK

MY FRIENDS

Name

Address

Phone

E-Mail

MY FRIENDS

Name

Address

Phone

E-Mail

The Eternal Church of God
P.O. Box 80248
Billings, MT 59108

800.723.6108
eternalcog.org